



TW 36-150

Radial Telescopic Conveyor



REDUCED COST



**SITE OPERATING
EFFICIENCY**



**ENVIRONMENTAL
CONSIDERATIONS**

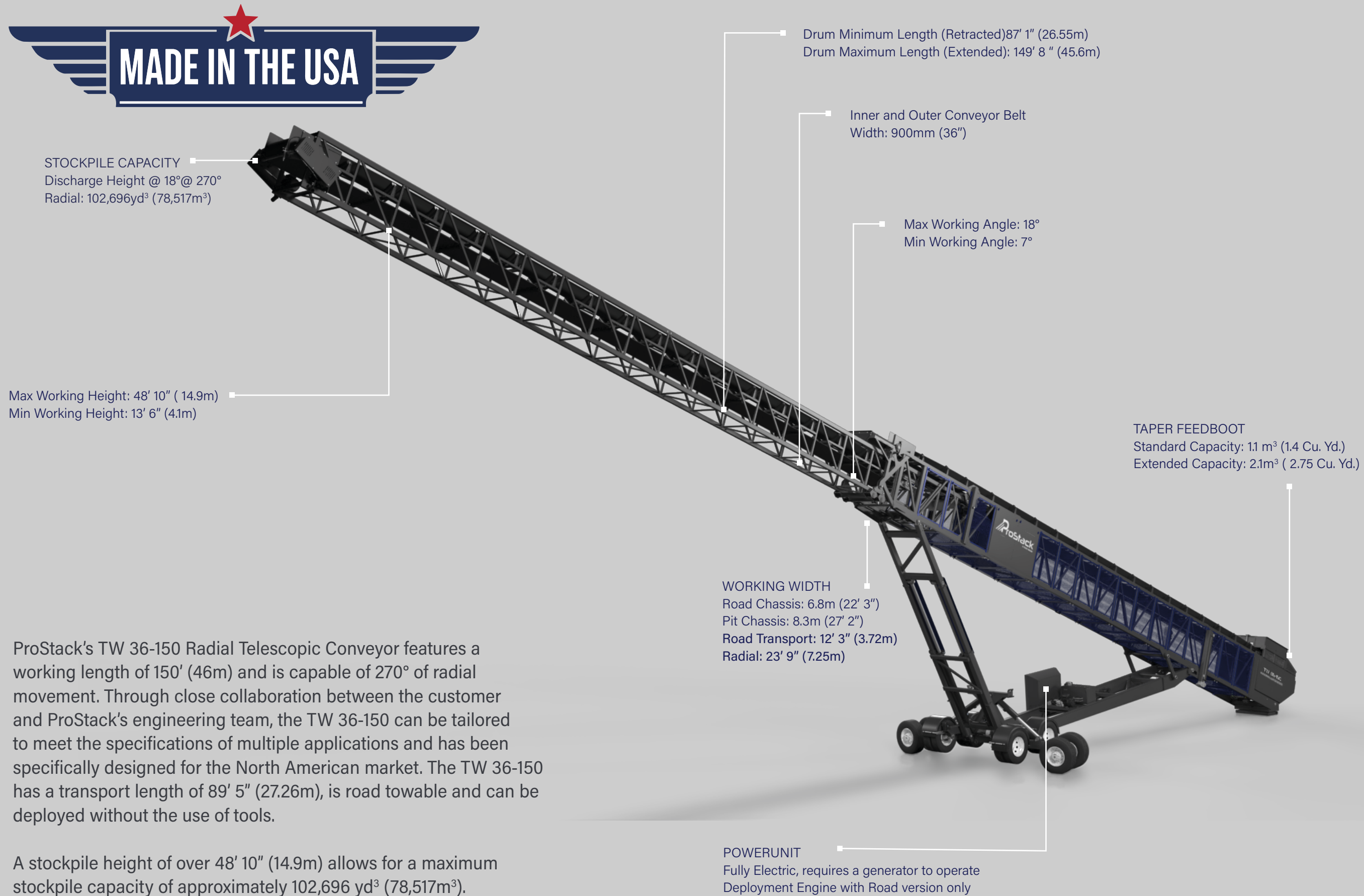


**IMPROVE HEALTH
& SAFETY**



**PRODUCT
QUALITY**

OVERVIEW TW 36-150



FEEDBOOT DEADBOX	
Standard Capacity	1.1 m³ (1.4 Cu. Yd.)
Feed In Width	1500mm (4' 10")
Extended Capacity	2.1m3 (2.75 Cu. Yd.)
Extended Feed In Width	1820mm (5' 11")
Minimum Feed In Height	2450mm (8' 1")
Extended Minimum Feed In Height	2950mm (9'8")

CONVEYORS	
Inner Conveyor	
Width	900mm (36")
Belt Centres	24.25m (79' 6")
Belt Type (Plain/Chevron)	Plain
Belt Spec	220 PIW 2-PLY 3/16" X 1/16"
Drive Drum Diameter	16" (427mm)
Tail Drum Diameter	14" (356mm)
Max Belt Speed of Conveyor	2.6 m/min
Motor Size & type	2 x 11KW
Outer Conveyor	
Width	900mm (36")
Belt Centres	26.55m (87' 1 ")
Belt Type (Plain/Chevron)	Plain
Belt Spec	220 PIW 2-PLY 3/16" X 1/16"
Drive Drum Diameter	16" (427mm)
Tail Drum Diameter	14" (356mm)
Max Belt Speed of Conveyor	2.1 m/sec
Motor Size & type	1 x 30KW
Operating Angle	7-18°

WEIGHT	
Total Weight (STD) (kg)	29,500kg (64,310lbs)
Axle Weight (Transport)	19,760kg (43560 lbs)
Kingpin Weight	9,410 kg (20,745 lbs)
Maximum Tonnage	1000 TPH
Maximum Feed Size	100mm (4") based on 30 degree surcharge

OPTIONS
Upgrade to 1000TPH
Pull Cord Emergency Stop
Feedboot Liners: 6mm Mild Steel
Feedboot Liners: 6mm Wear Plate (AR400)
Feedboot Liners: 12mm Wear Plate (AR400)
Feedboot Liners: 20mm rubber
Conveyor Fitted With Chevron Belt EP315/3 Ply x 3+1.5 Covers
Conveyor Fitted With Heavy Duty Plain Belt EP500/4 Ply x 8+2 Covers
Working Lights
Belt Weigher
Radio Remote
Low level Grease points for Inner Conveyor and Outer conveyor
Self Aligning Rollers

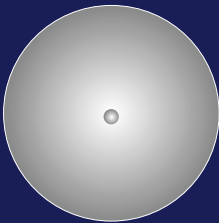
GENERAL
Road Trasportable - Machine fully Assembled in USA
Emergancy Stops x5
Twin Radial Wheel Drive
Underguard Length Of Outer Section
Outer Conveyor side guards
Lorry mount Kit - CW 5.5HP deployment engine, Hydraulic jacking legs, Hyd kingpin swivel
Hydraulic Raise /lower Raidal powered by 11kw Electric motor.
Conveyor head drum bearing automatic greasing cartridge
Hydraulic Winch for telescopic action
Hydraulic Tank Capacity 265 L

STOCKPILE CAPACITIES	
Discharge Height @ 18° Conical Stockpile Full extension	
0° radial	7,065 m³ (9,241 yd³)
30° radial	15,004 m³ (19,624 yd³)
60° radial	22,943 m³ (30,008 yd³)
90° radial	30,882 m³ (40,392 yd³)
120° radial	38,821 m³ (50,776 yd³)
1500 radial	46,760 m³ (61,160 yd³)
1800 radial	54,700 m³ (71,545 yd³)
2700 radial	78,517 m³ (102,696 yd³)
Variable Speed (Y/N)	Yes (via Pulley Change)

STOCKPILE CONFIGURATIONS

The Terex automated telescopic action can create 30% more stockpile capacity than fixed length radial conveyors.

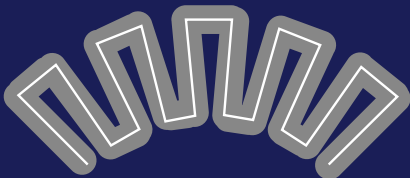
With standard conveyor producing a manual conical stockpile, 6 other automated patterns creating stockpiles as shown in below image.



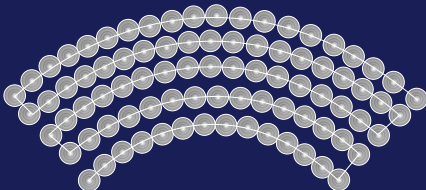
Standard Conveyor



Standard Radial



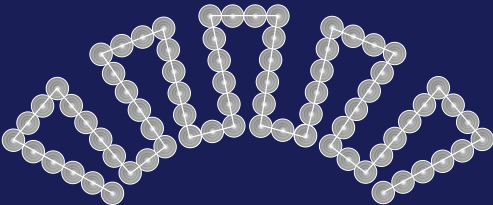
Inline Windrow



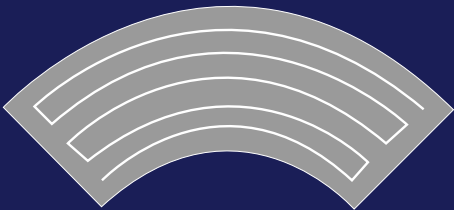
Radial Conical



Radial Windrow



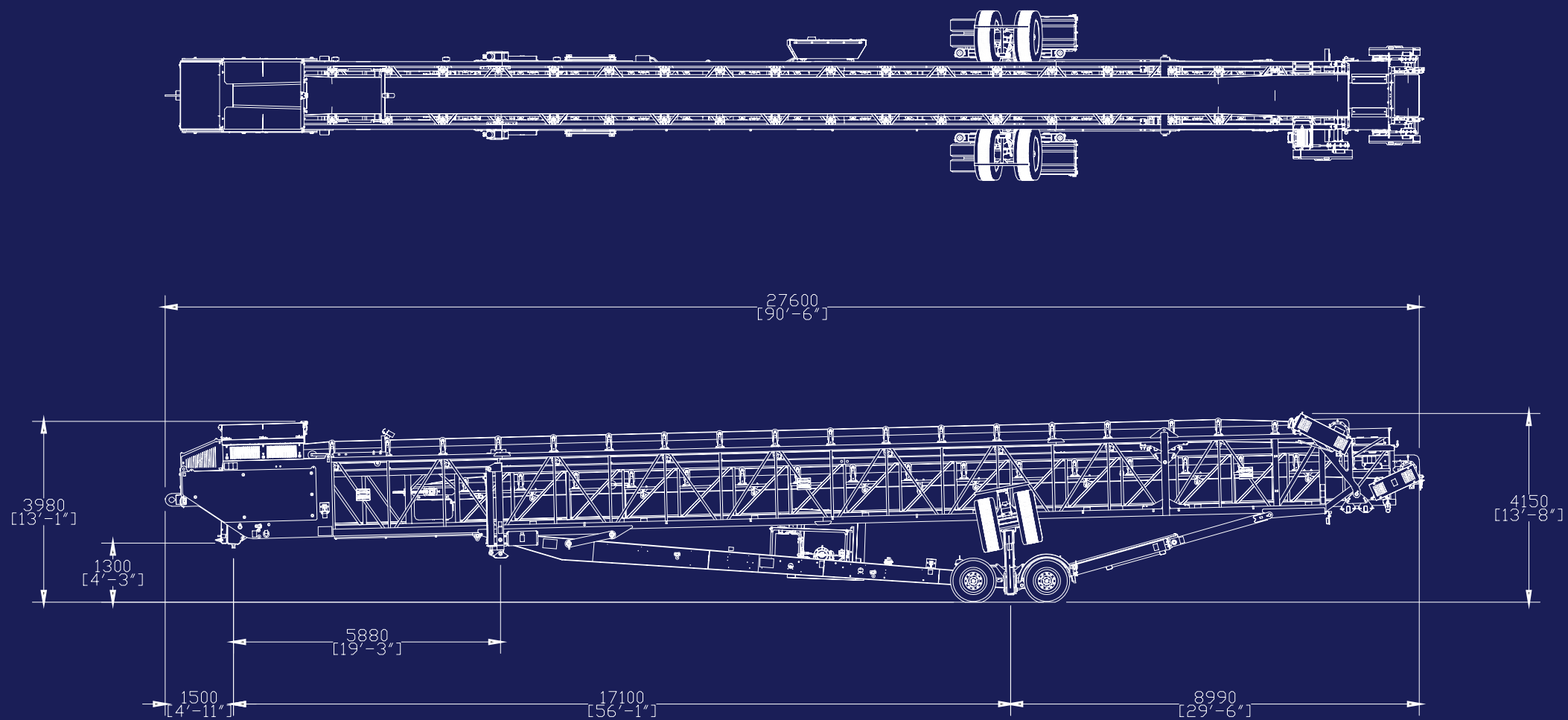
Inline Conical



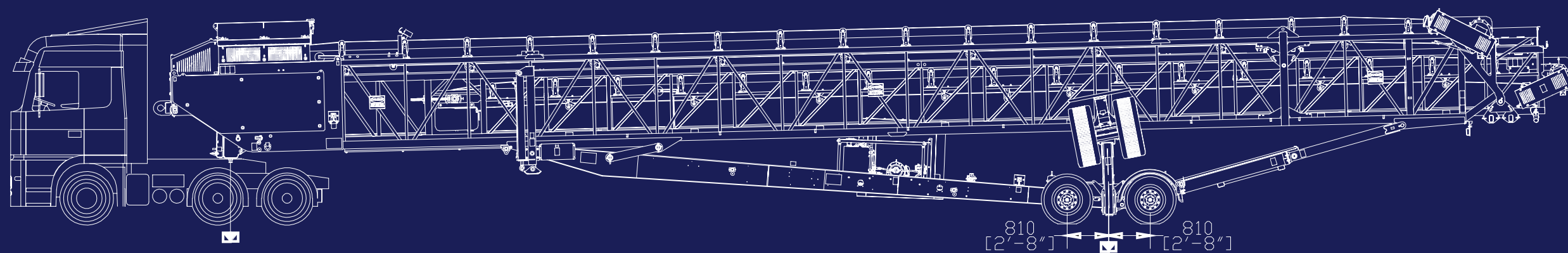
Radial Windrow Flat Top

DIMENSIONS TW 36-150

TRANSPORT



TRANSPORT



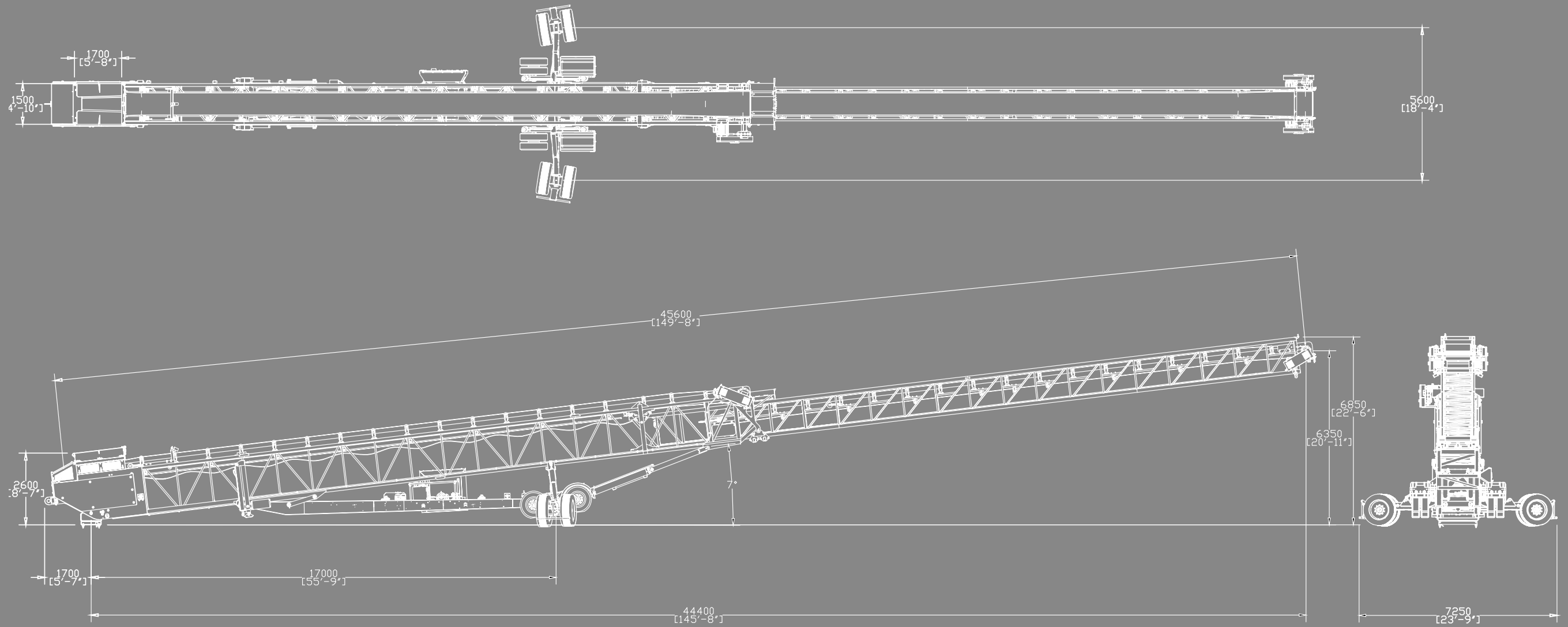
9410KG / 20745LBS
ACTING AT FIFTH
WHEEL

19760KG / 43560LBS
ACTING AT TRANSPORT
WHEELS

9880KG / 21780 LBS
PER AXLE

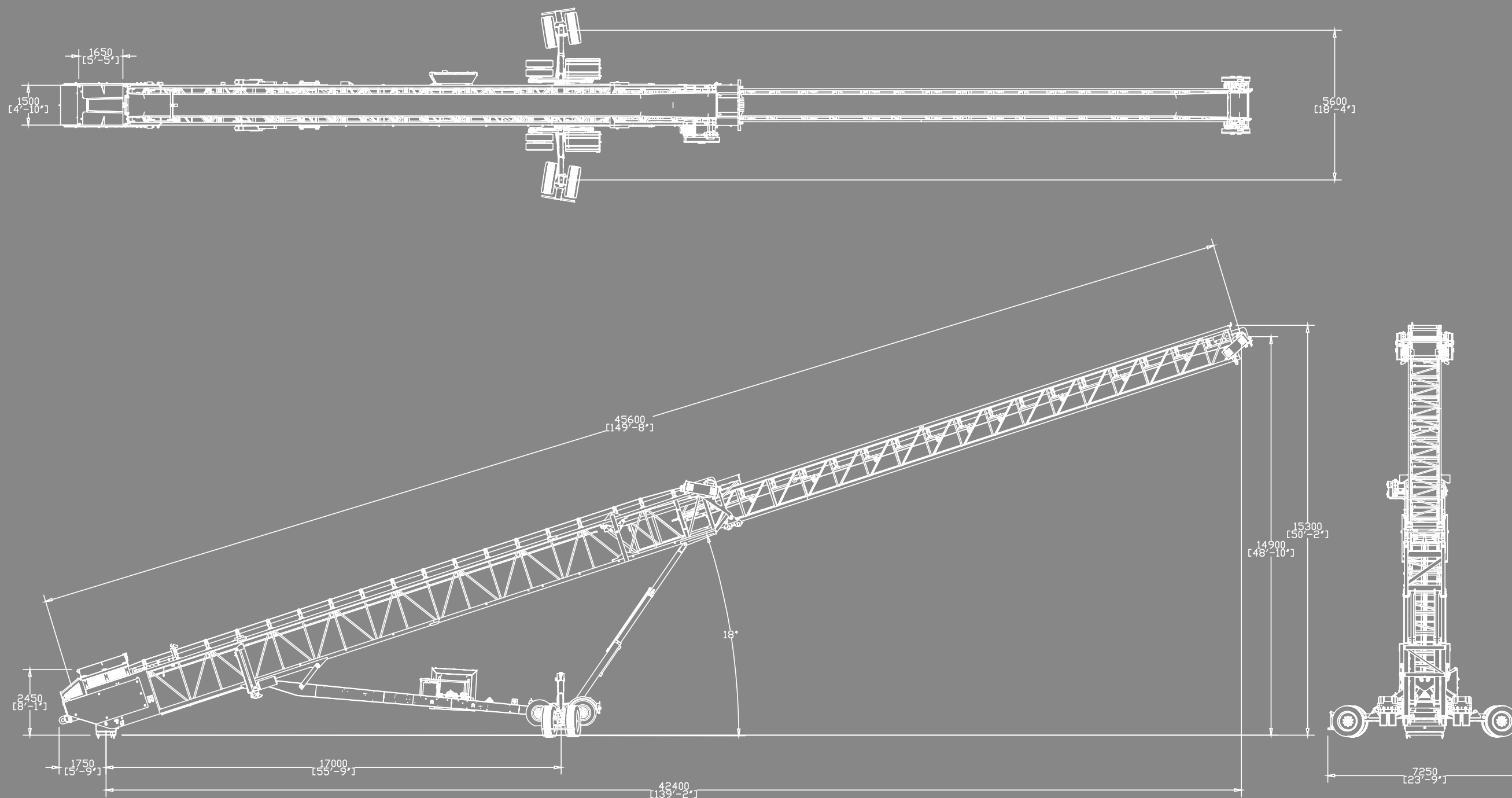
DIMENSIONS TW 36-150

WORKING MINIMUM HEIGHT



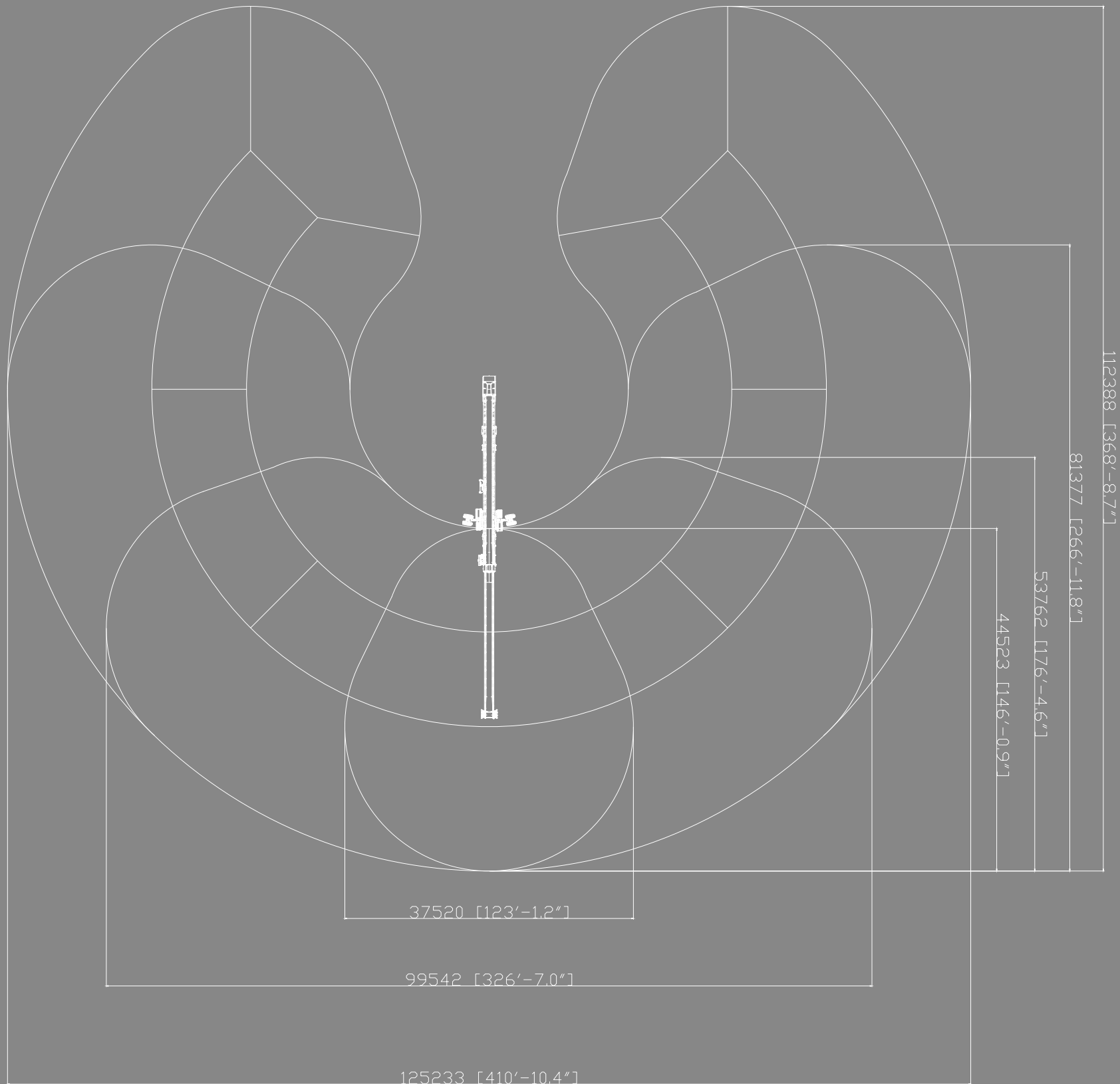
DIMENSIONS TW 36-150

WORKING MAXIMUM HEIGHT



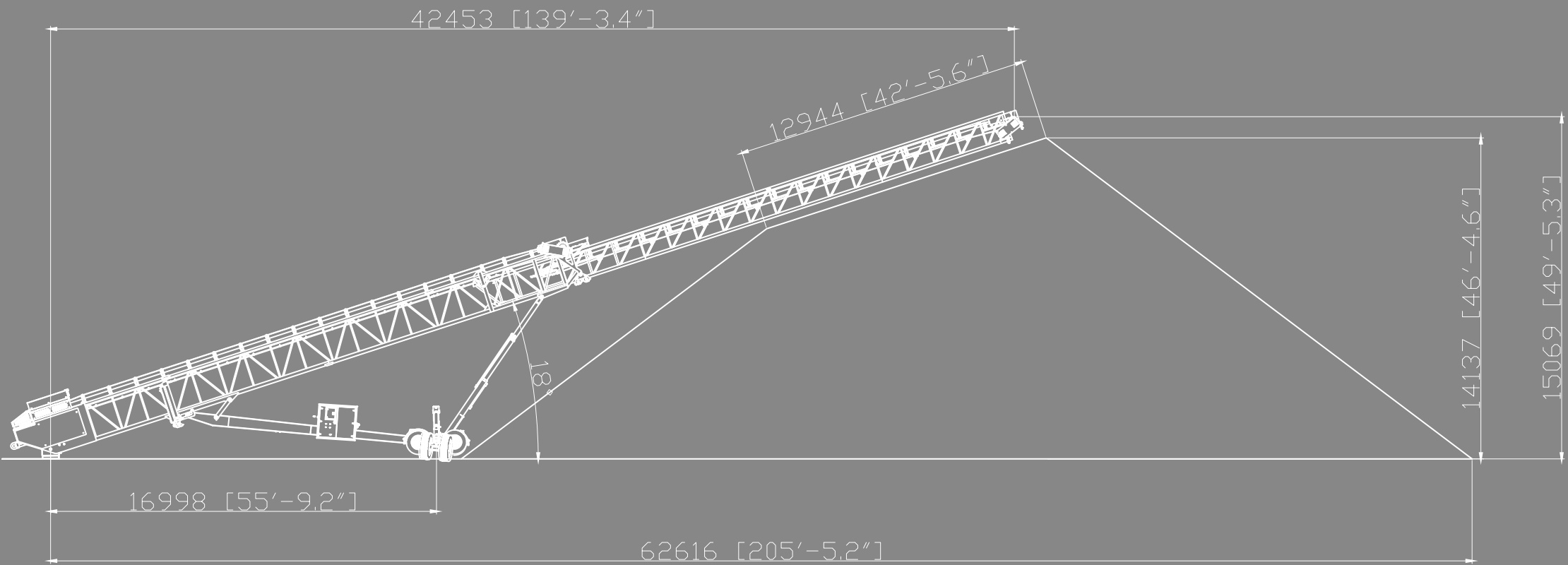
DIMENSIONS TW 36-150

WORKING



DIMENSIONS TW 36-150

WORKING STOCKPILE



RADIAL DEG	VOLUME (m3)	VOLUME (yrds3)	MASS (Tonnes)	MASS (Ton)
0	7065	9241	11304	12434
90	30882	40392	49411	54352
180	54700	71545	87520	96272
270	78517	102696	125627	138190



FOR FURTHER INFORMATION PLEASE CONTACT:

Tel: +44 (0) 288 771 8500

Email: ProStack@terex.com

www.terex.com/prostack



ProStack[®]
A TEREX BRAND

AFTER SALES SUPPORT

We provide comprehensive after sales support, maintenance support, provision of spare parts, and on-call customer help & advice.

- ✓ Parts
- ✓ Warranty
- ✓ Service
- ✓ 24/7 Help Desk
- ✓ Telematics
- ✓ Training

Effective June 2025 Product specifications and prices are subject to change without notice or obligation. The photographs and/or drawings in this document are for illustrative purposes only. Refer to the appropriate Operator's Manual for instructions on the proper use of this equipment. Failure to follow the appropriate Operator's Manual when using our equipment or to otherwise act irresponsibly may result in serious injury or death. The only warranty applicable to our equipment is the standard written warranty applicable to the particular product and sale and Terex USA LTD. makes no other warranty, express or implied. Products and services listed may be trademarks, service marks or trade-names of Terex Corporation and/or its subsidiaries in the USA and other countries. All rights are reserved. Terex[®] and ProStack is a registered trademark of Terex Corporation in the USA and many other countries.
Copyright 2025 Terex USA Ltd.