

XR Conveyors

OUTPERFORM  OUTLAST 



1042XR - 100' x 42"



842XR - 80' x 42"



Radial Assembly

- Braking Road Axles
- Hydraulic Fold Down Axle with Dual Radial Drive

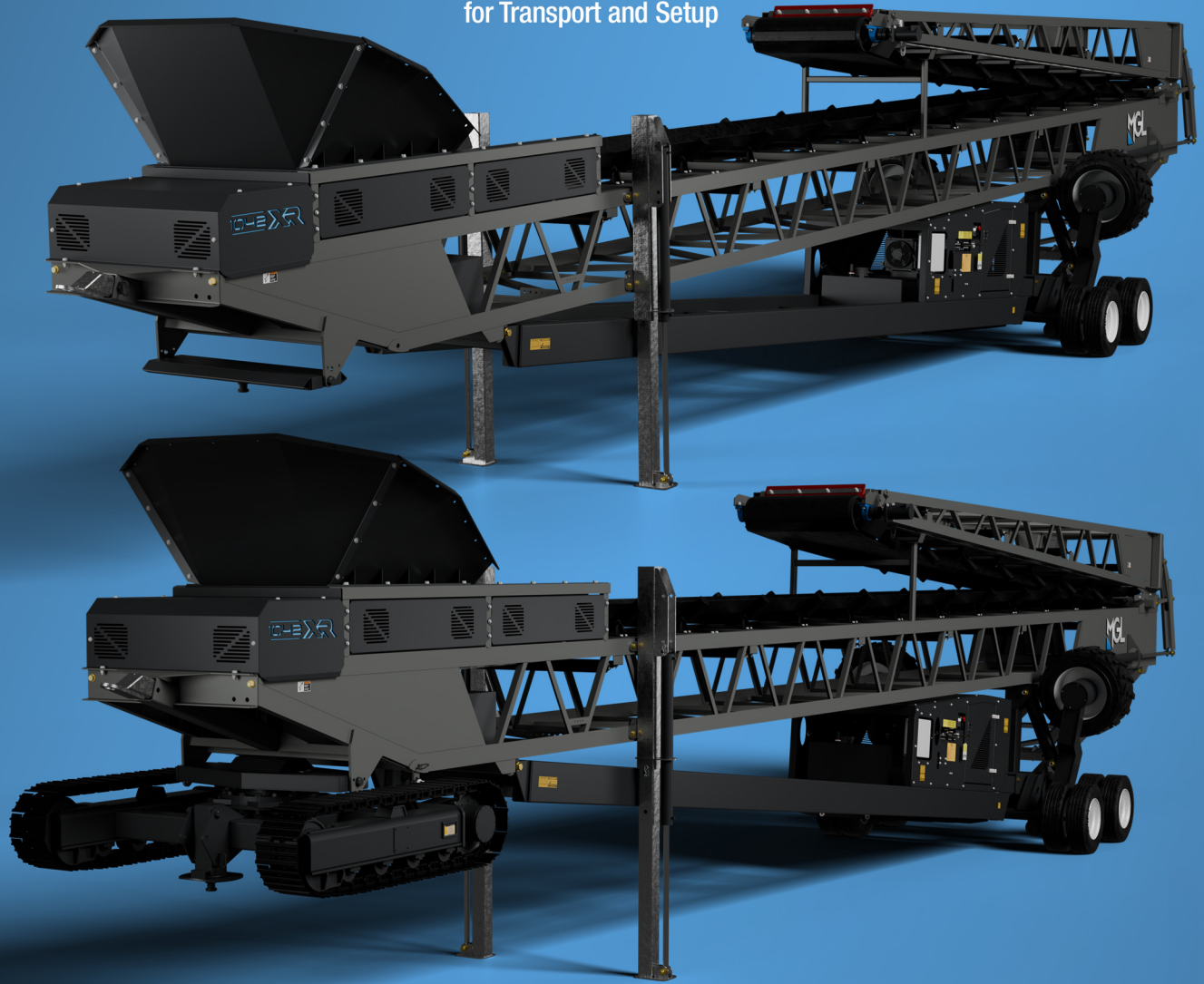
Track Dolly (Optional)

- Wireless Remote Operated
- Integrated King Pin



Road Towable by Semi Tractor

No Tools or Trailer Required
for Transport and Setup



Ease of Accessibility



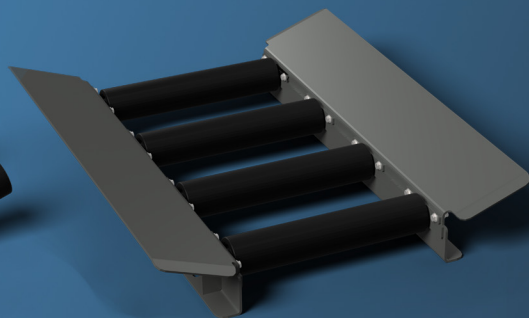
Sleak, Maintenance-Friendly Guarding

Modular Impact Zone

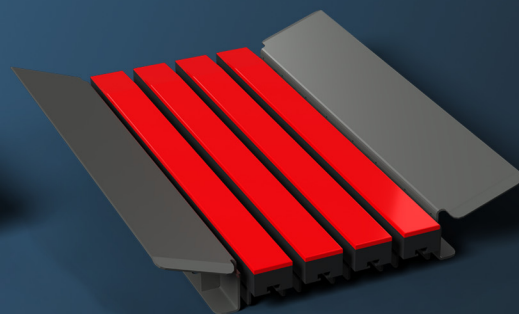
Sleak, Simple Guarding



Standard Rollers

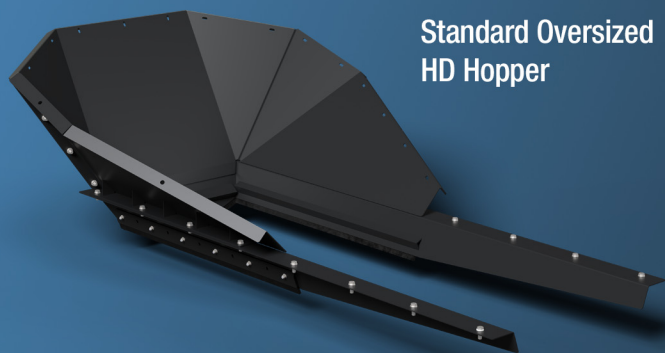


Hybrid 1
(Steel Side Plates
with Center Rollers)

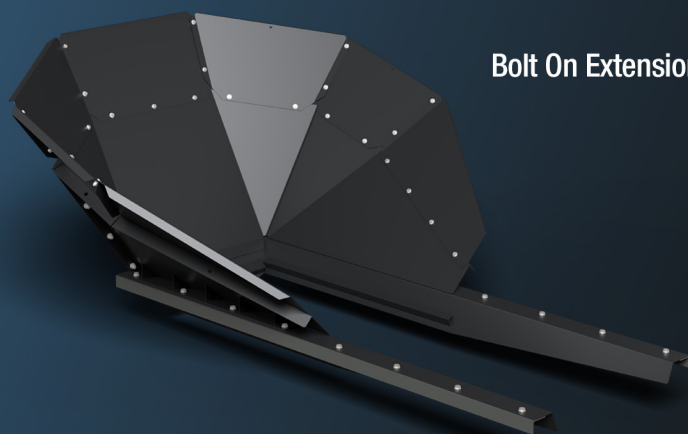


Hybrid 2
(Steel Side Plates with
Center Impact Strips)

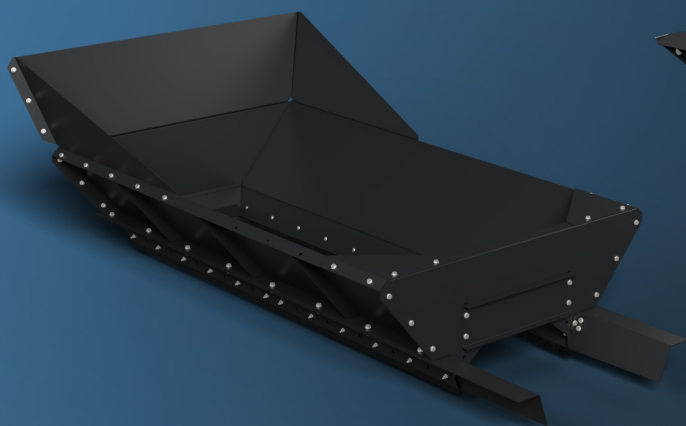
Hopper Options



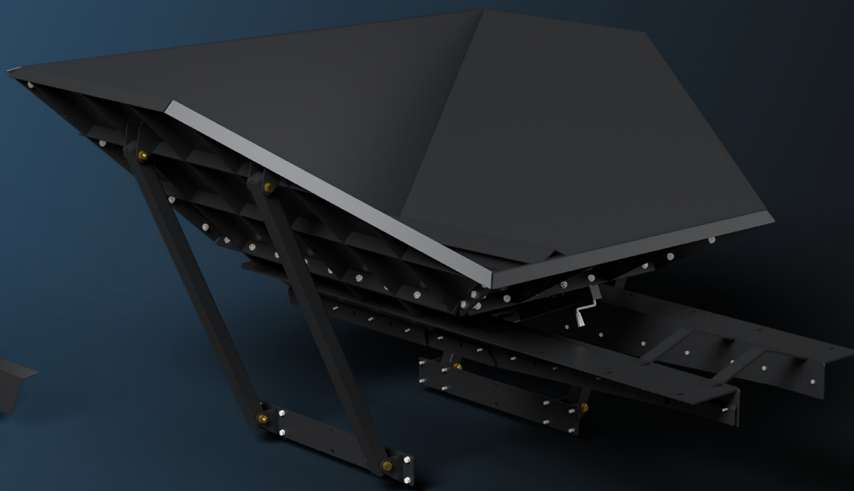
Standard Oversized
HD Hopper



Bolt On Extension



Direct Feed Mulch Hopper
(Side Feed)



Direct Feed Aggregate Hopper
(Rear Feed)



Specifications



GENERAL DIMENSIONS

| | | |
|-----------------------------|------------|------------|
| Length (working) | 80' | 100' |
| Width (max.) | 16' 7" | 18' 4" |
| Height (max. working) | 35' | 41' |
| Length (transport) | 53' 5" | 67' 6" |
| Width (transport) | 10' | 11' 7" |
| Height (transport, on axle) | 11' 10" | 13' 6" |
| Weight (approximate) | 25,000 lbs | 31,500 lbs |

BELT

| | | |
|--------------|--------------------------|--------------------------|
| Width | 42" | 42" |
| Type | Plain, 3-Ply, Vulcanized | Plain, 3-Ply, Vulcanized |
| Belt Cleaner | Dual Urethane Blade | Dual Urethane Blade |

POWER UNIT / HYDRAULICS

| | | |
|-----------------------------------|------------------------|-----------------------|
| Make and model | Kohler KDI-1903 TIER 4 | Cummins QSF2.8 TIER 4 |
| Engine rating | 56 HP / 165 ft-lbs | 76 HP / 221 ft-lbs |
| Diesel tank capacity (gallons) | 60 | 60 |
| Hydraulic tank capacity (gallons) | 80 | 80 |
| Head height adjustment | Hydraulic | Hydraulic |
| Fold (for transport) | Hydraulic | Hydraulic |

CHASSIS

| | | |
|-----------------|--|--|
| Towing Axle | Single Braking Road Axle | Tandem Braking Road Axle |
| Radial Assembly | Hydraulic Fold Down Radial Assembly with Dual Wheel Drive | Hydraulic Fold Down Radial Assembly with Dual Wheel Drive |

HOPPER

| | | |
|--------------------------------------|-----------|-----------|
| Width (max. w/ standard extension) | 6' 10" | 6' 10" |
| Feed height (min. without extension) | 4' | 4' |
| Hopper extension (standard) | Removable | Removable |

STOCKPILE

| | | |
|---------------------------------|------------|------------|
| Height (max.) | 34' 6" | 41' 6" |
| Working angle (max.) | 24 degrees | 24 degrees |
| Angle of repose capacity (max.) | | |
| -Cone: | 2,800 CY | 4,750 CY |
| -90° Radial: | 9,370 CY | 12,285 CY |
| -180° Radial: | 15,940 CY | 29,050 CY |

OPTIONS / AVAILABILITY

| | | |
|--|---------------------------|------------------|
| Track dolly | Yes | Yes |
| Hydraulic fold down axle w/ dual wheel drive & braking road axle | Yes | Yes |
| Hydraulic transport jack | Yes | Yes |
| Hydraulic axle lift/extend/pivot | Yes | No |
| Engine upgrade | 74 HP (Kohler or Cummins) | 125 HP JCB 444TA |
| Cleated belt | Yes | Yes |
| Belt scale | Yes | Yes |
| Over-sized hopper extension | Standard | Standard |
| Various impact zone configurations | Yes | Yes |

MGLengineering.com

2740 PARKWAY STREET • LAKELAND, FL 33811 | 863.648.0320 | FAX: 863.648.0589