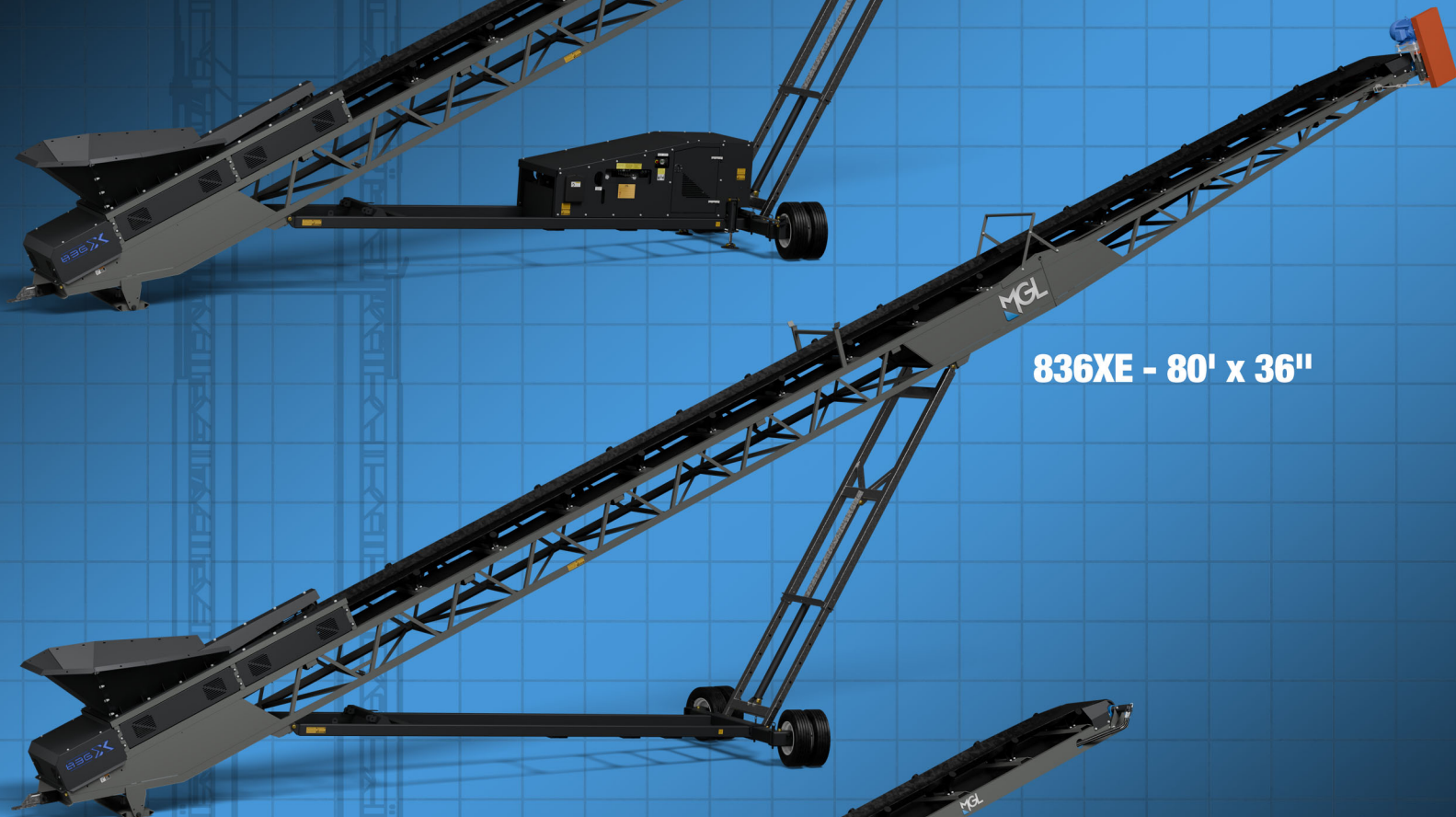


Wheeled Conveyors

OUTPERFORM  OUTLAST 



836X - 80' x 36"



836XE - 80' x 36"

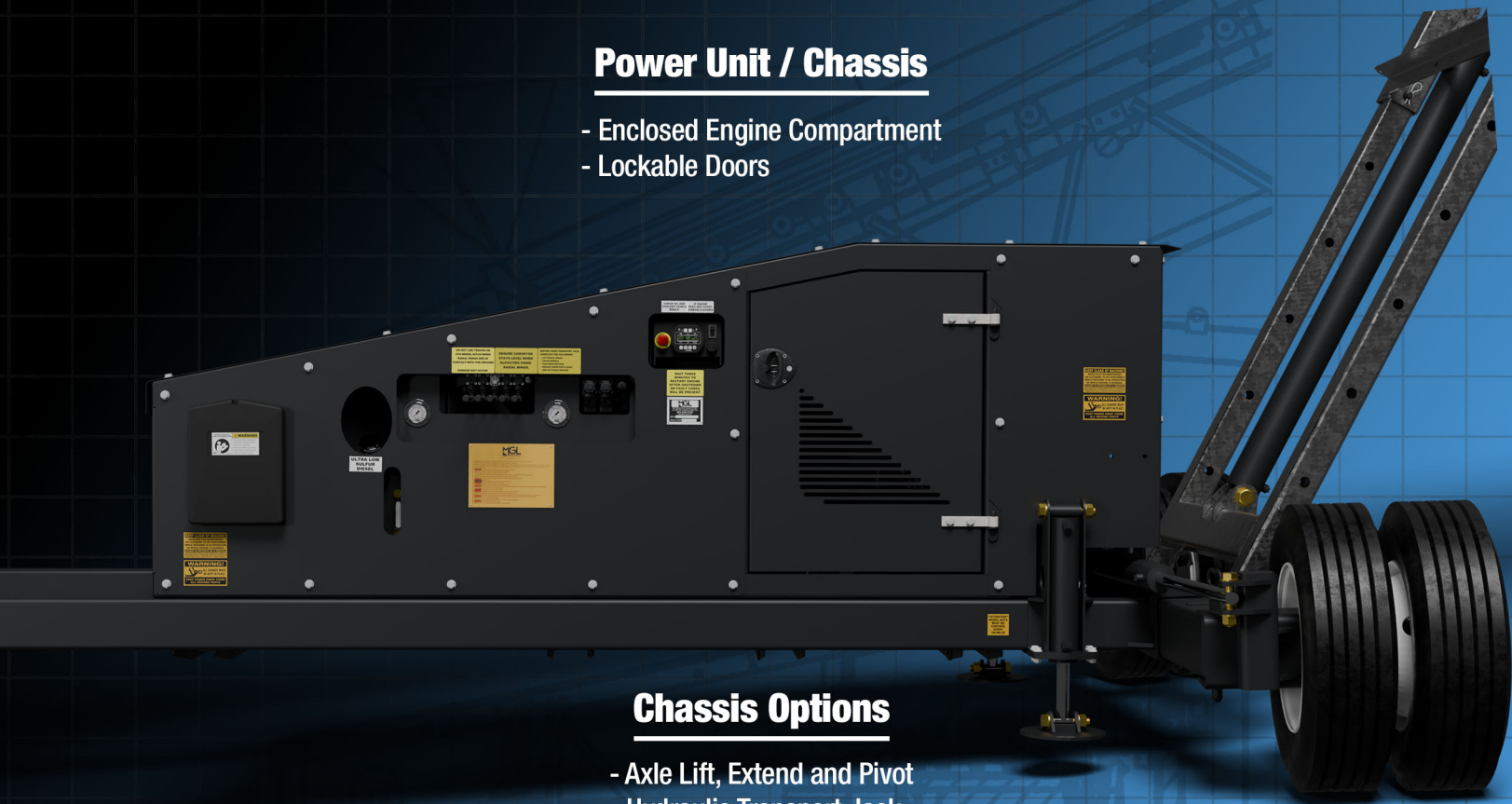


530 - 50' x 30"

430 - 40' x 30"

Power Unit / Chassis

- Enclosed Engine Compartment
- Lockable Doors



Chassis Options

- Axle Lift, Extend and Pivot
- Hydraulic Transport Jack

Ease of Accessibility

Sleak, Maintenance-Friendly Guarding

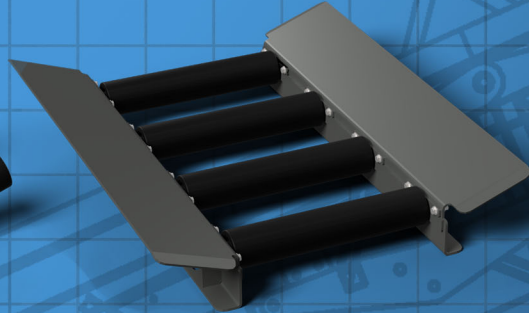


Modular Impact Zone

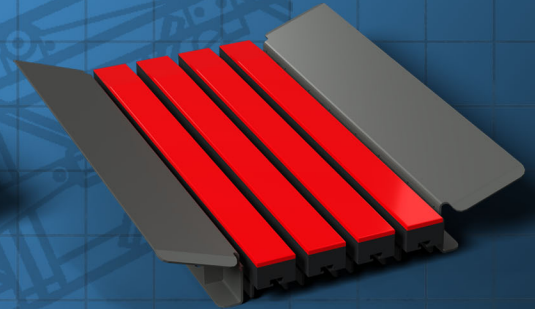
Sleak, Simple Guarding



Standard Rollers

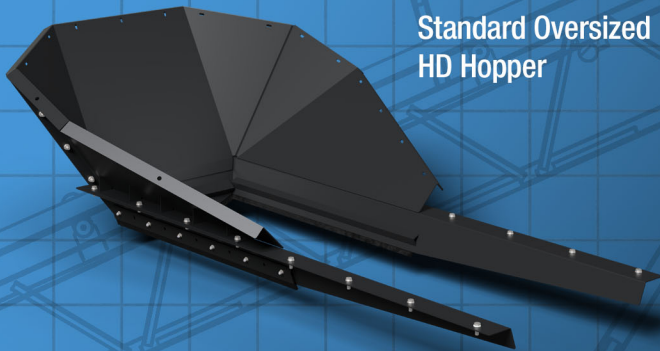


Hybrid 1
(Steel Side Plates
with Center Rollers)

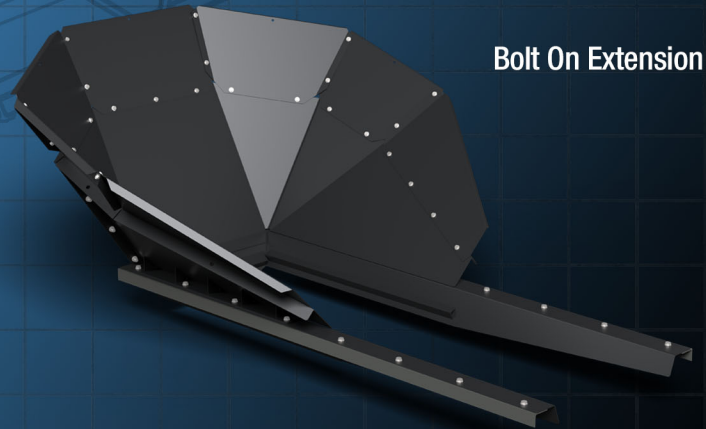


Hybrid 2
(Steel Side Plates with
Center Impact Strips)

Hopper Options

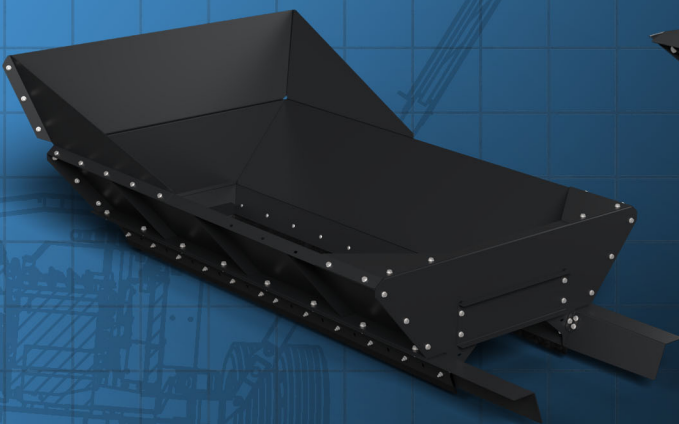


Standard Oversized
HD Hopper

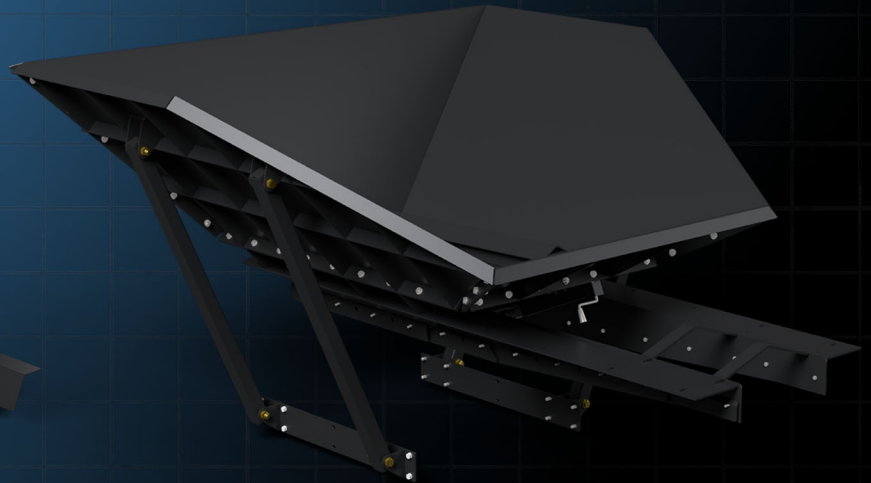


Bolt On Extension

Direct Feed Mulch Hopper
(Side Feed)



Direct Feed Aggregate Hopper
(Rear Feed)



Specifications



GENERAL DIMENSIONS

Length (working)	80'	80'	50'	40'
Width (max.)	16' 7"		12' 10"	9' 9"
Height (max. working)	35'	33'	22' 2"	15' 11"
Length (transport)	53' 5"	53' 5"	49' 11"	40' 6"
Width (transport)	10'	10'	9' 2"	8' 5"
Height (transport, on axle)	11' 10"	11' 10"	12' 9"	10' 5"
Weight (approximate)	25,000 lbs	18,000 lbs	6,800 lbs	5,500 lbs

BELT

Width	36"	36"	30"	30"
Type	Plain, 3-Ply, Vulcanized	Plain, 3-Ply, Vulcanized	Plain, 2-Ply, Clipped	Plain, 2-Ply, Clipped
Belt Cleaner	Dual Urethane Blade	Dual Urethane Blade	Manual Adjust Rubber Blade	Manual Adjust Rubber Blade

POWER UNIT / HYDRAULICS

Engine make and model	Kohler KDI-1903 TIER 4	N/A (Electric Drive)	Optional	Optional
Engine rating	56 HP / 165 ft-lbs	-	-	-
Diesel tank capacity (gallons)	60	-	-	-
Hydraulic tank capacity (gallons)	80	-	-	-
Head height adjustment	Hydraulic	Hydraulic Option	On Hydraulic Models	On Hydraulic Models
Fold (for transport)	Hydraulic	Hydraulic Option	-	-

CHASSIS

Towing Axle	Single Road Axle	Single Road Axle	Single Road Axle	Single Road Axle
Radial Assembly	Radial Assembly with Dual Wheel Drive	Wheel Drive Option	Manual Radial Assembly	Manual Radial Assembly

HOPPER

Width (max. w/ standard extension)	7	7	4'	4'
Feed height (min. without extension)	6' 8"	6' 8"	5'	5'
Hopper extension (standard)	Removable	Removable	Removable	Removable

STOCKPILE

Height (max.)	27'	27'	17' 6"	13' 4"
Conveyor working angle (max.)	24 degrees	24 degrees	24 degrees	22 degrees
Angle of repose capacity (max.)				
-Cone:	1,400 CY	1,400 CY	350 CY	200 CY
-90° Radial:	5,900 CY	5,900 CY	1,500 CY	780 CY
-180° Radial:	10,400 CY	10,400 CY	2,600 CY	1,400 CY

OPTIONS / AVAILABILITY

Single/Dual wheel drive & braking road axle	Yes	No	No	No
Hydraulic axle lift/extend/pivot	Yes	No	No	No
Engine upgrade	74 HP (Kohler or Cummins)	Yes/PU	24 HP	24 HP
Cleated belt	Yes	Yes	Yes	Yes
Belt scale	Yes	Yes	Yes	Yes
Over-sized hopper extension	Standard	Standard	Standard	Standard
Various impact zone configurations	Yes	Yes	Yes	Yes

MGLengineering.com

2740 PARKWAY STREET • LAKELAND, FL 33811 | 863.648.0320 | FAX: 863.648.0589