

# Track Conveyors

OUTPERFORM  OUTLAST 



**842T - 80' x 42"**



**636T - 65' x 36"**



**530T - 50' x 30"**



## **No Compromises** **HD Lattice Frame (80' & 65')**

No Shipping Container Restraints

### **Track Undercarriage**

Enclosed / locking with high volume air flow

All leg members  
galvanized

Largest Footprint in Class

### **Ease of Accessibility**

Sleak, Maintenance-Friendly Guarding

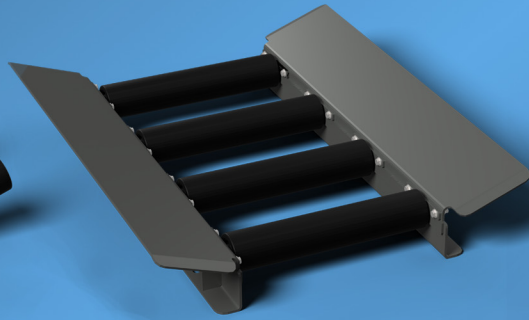


## Modular Impact Zone

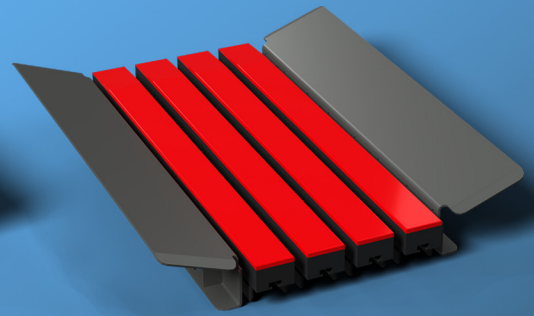
Sleak, Simple Guarding



Standard Rollers

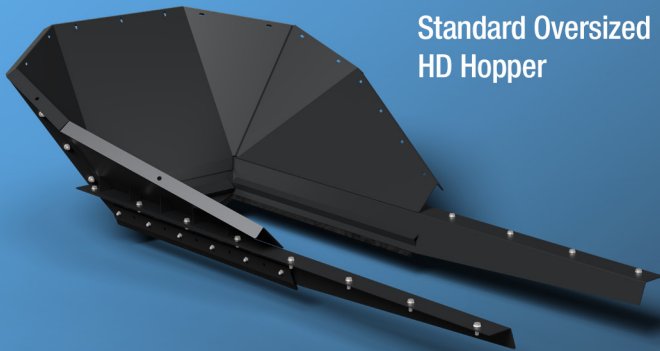


Hybrid 1  
(Steel Side Plates  
with Center Rollers)

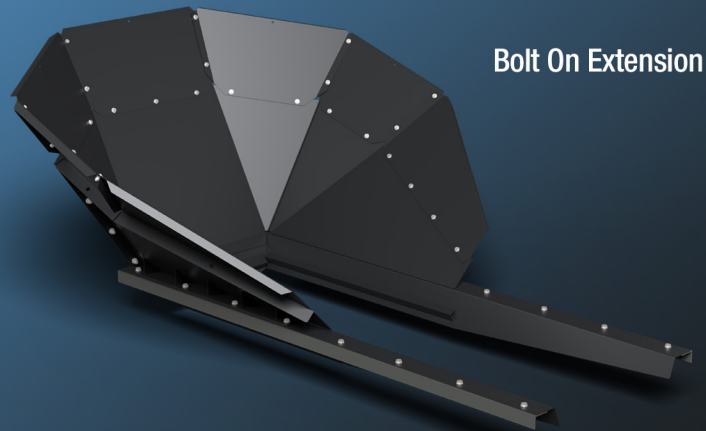


Hybrid 2  
(Steel Side Plates with  
Center Impact Strips)

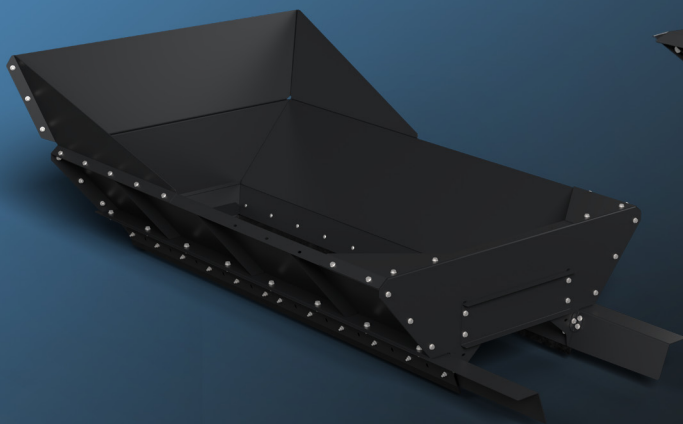
## Hopper Options



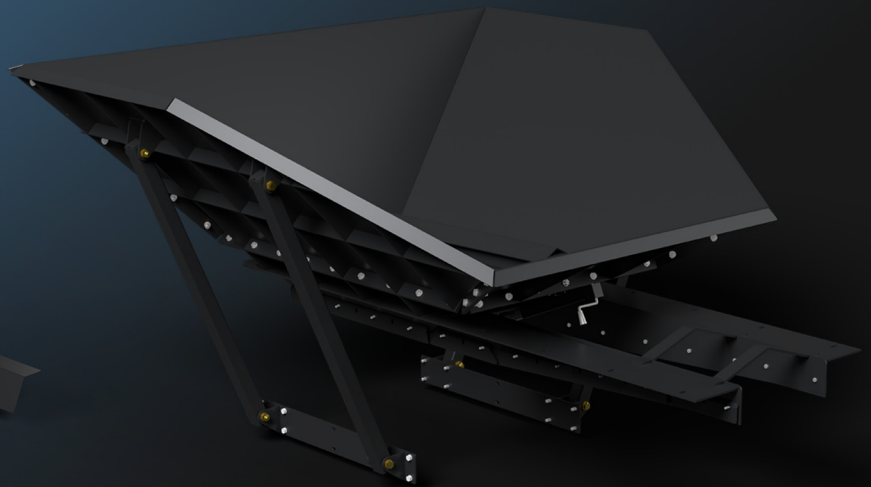
Standard Oversized  
HD Hopper



Bolt On Extension



Direct Feed Mulch Hopper  
(Side Feed)



Direct Feed Aggregate Hopper  
(Rear Feed)

# Specifications



## GENERAL DIMENSIONS

Length (working)	80'	65'	50'
Width (working)	8' 5"	8'	8'
Height (max. working)	35'	26' 6"	23' 6"
Length (transport)	53' 5"	45' 5"	50' 2"
Width (transport)	8' 5"	8'	8'
Height (transport)	11' 10"	11' 4"	8' 11"
Weight (approximate)	25,000 lbs	22,000 lbs	14,000 lbs

## BELT

Width	42"	36"	30"
Type	Plain, 3-Ply, Vulcanized	Plain, 3-Ply, Vulcanized	Plain, 2-Ply, Clipped
Belt cleaner	Dual Urethane Blade	Dual Urethane Blade	Single Urethane Blade

## POWER UNIT / HYDRAULICS

Make and model	Kohler KDI 1903	Kohler KDI 1903	Kohler KDW1404
Engine rating	56 HP / 165 ft-lbs	56 HP / 165 ft-lbs	24 HP / 52 ft-lbs
Diesel tank capacity (gallons)	60	22	22
Hydraulic tank capacity (gallons)	80	48	48
Head and tail height adjustment	Hydraulic	Hydraulic	Hydraulic
Fold (for transport)	Hydraulic	Hydraulic	Hydraulic

## UNDER CARRIAGE

Tracks	Strickland	Strickland	Strickland
Length (overall)	15' 2"	11' 6"	11' 6"
Length (sprocket centers)	13' 3"	9' 7"	9' 7"
Pad width	16"	16"	16"
Ground footprint (length x width)	13' 3" x 8' 5"	9' 7" x 8'	9' 7" x 8'
Controls	Wireless Remote	Wireless Remote	Wireless Remote

## HOPPER

Width (max. w/ standard extension)	7' 4"	5' 3"	4' 9"
Feed height (min. without extension)	4'	4'	4'
Hopper extension (standard)	Removable	Removable	Removable

## STOCKPILE

Height (max.)	34' 6"	26'	23'
Working angle (max.)	24 degrees	22 degrees	25 degrees
Cone capacity (max.)	2,700 CY	1,200 CY	750 CY

## OPTIONS / AVAILABILITY

Engine upgrade	74 HP (Kohler, Cummins or FPT)	No	56 HP Kohler
Reversing radiator fan	Yes	Yes	No
Cleated belt	Yes	Yes	Yes
Remote raise/lower	Yes	No	No
Belt scale	Yes	Yes	Yes
Over-sized hopper extension	Standard	6' 10" wide	6' 4" wide

# MGLengineering.com