

POWERSCREEN® PHOENIX 3300

TROMMEL SCREEN



TECHNICAL SPECIFICATION - REV 5 01/11/2024





PHOENIX 3300



OVERVIEW

SPECIFICATION

Total Weight	37,500kg (82,673lbs) – depending on options
Axle Load:	8,500kg (18,739lbs)
Kingpin load:	12,000kg (26,455lbs)
Transport	Length 21.1m (69' 2") Height 4.1m (13' 6") Width 3m (9' 10")
Working	Length 32.3m (105' 9") Width 15.8m (51' 8") Height 5.9m (19' 4")

The Phoenix 3300 is designed to offer unrivalled production throughput and application flexibility.

The Powerscreen Phoenix 3300 trommel screen is designed to offer unrivalled production throughput and application flexibility. The robust design with optional features such as heavy duty tipping grid or double deck vibrating grid make the Phoenix 3300 the most versatile trommel on the market today. The machine performs equally well in heavy C&D applications as it does in high volume compost production. The 180° swivel fines conveyor, with a 5.89m (19' 3") discharge, means the machine can generate massive stockpiles. This swivel feature can be controlled via a radio remote while the machine is in operation, minimising downtime.

A powerful four wheel drive system with high performance friction grip wheels is used to turn the trommel drum giving operators the ability to run bi-directionally. Woven mesh or heavy duty punch plate panels can be fitted to the trommel drum ensuring all application requirements are met.

Caterpillar Tier 3 or Tier 4 engines combined with powerful hydraulics and auto feeder speed control guarantee the machine is always working at its optimum. A fifth wheel connection, triple axle bogie and a rapid setup time make the machine highly mobile.

The Phoenix 3300 is highly efficient in the separation and processing of wood chippings, top soil, compost, green waste, C&D waste and aggregates.



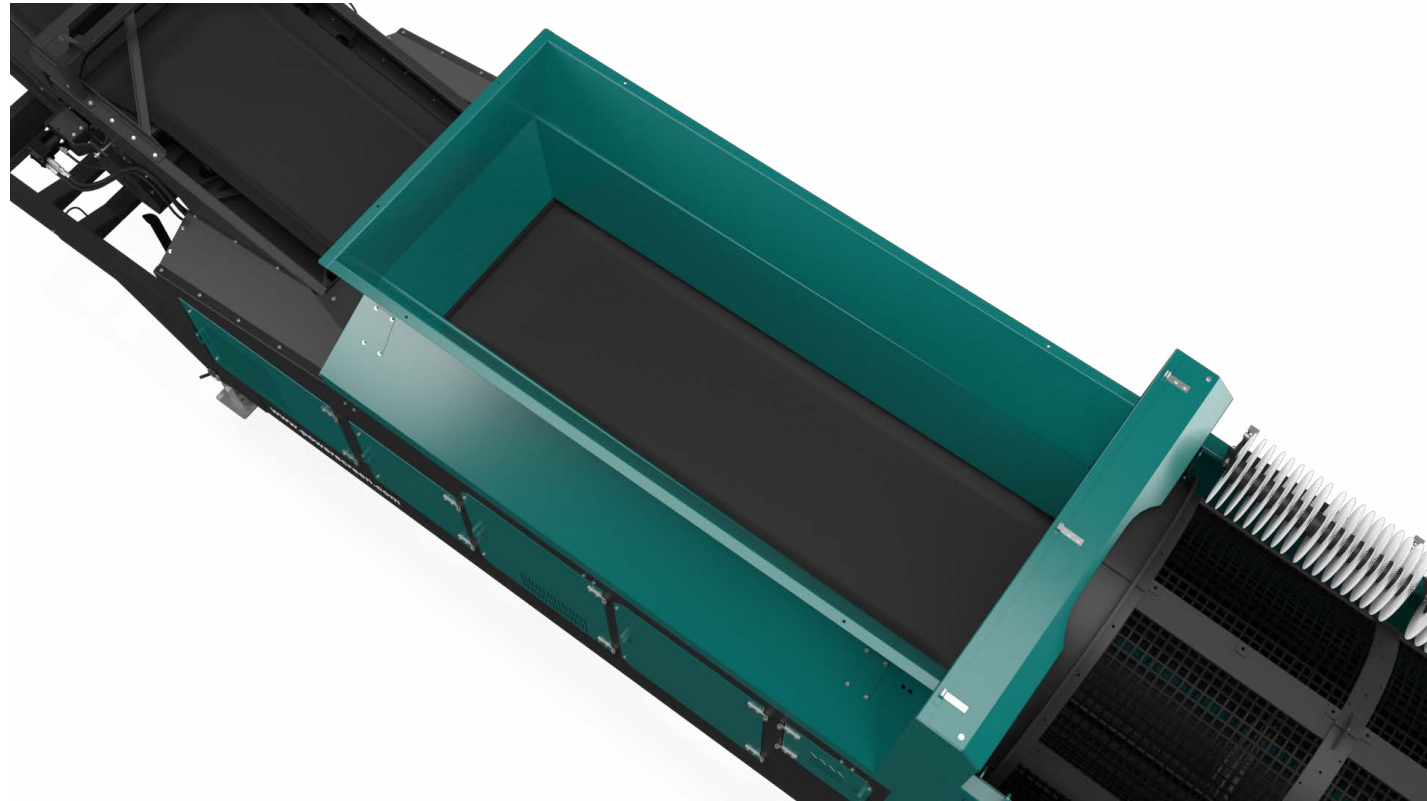


PHOENIX 3300



HOPPER AND BELT FEEDER

- 7.8m³ (10.2yd³) capacity
- 4.6m (15' 1") feeder length
- 1500mm (59") 3 ply plain belt, 4 + 2 covers
- Variable speed control c/w load sensing and automatic feeder shutdown
- Hopper extensions



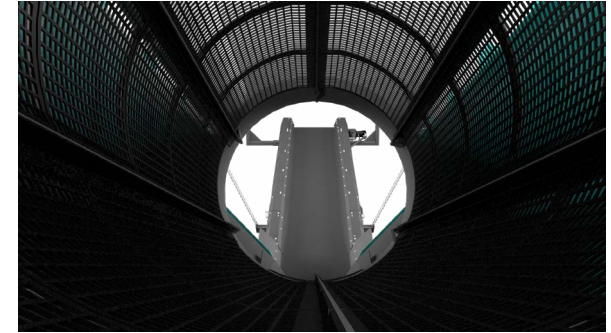


PHOENIX 3300



↓ DRUM

- 9.31m (30' 6") Length
- 2.32m (7' 6") Diameter
- 52m² (560ft²) screening area
- Friction four wheel drum drive system
- Variable speed control
- Mesh or Punch plate panels
- Inclined drum
- Variable operating angle 4.5° - 6°
- Tumbling action c/w nylon cleaning brushes
- Service access doors for maintenance





PHOENIX 3300



POWER UNIT & HYDRAULICS

- Caterpillar C7.1 Tier 3, 151kW (202 hp), 2200rpm max
- Caterpillar C4.4 Tier 4F 129kW (173hp), 2200rpm max (option)
- Caterpillar C4.4 Stage V 129kW (173hp)
- Fuel tank capacity 610L (134 Gal) (161 US Gal)
- Hydraulic tank 714L (157 Gal) (189 US Gal)
- Excellent service access
- Powerful hydraulics





PHOENIX 3300



COLLECTION CONVEYOR

- 1500mm (59") 3 ply plain belt, 4 + 2 covers
- Fully skirted & sealed
- Variable speed control





PHOENIX 3300



↓ FINES DISCHARGE CONVEYOR

- 1200mm (47") 3 ply plain belt, 4 + 2 covers
- Remote control 180° swivel
- Variable operating angle 10° - 28°
- Discharge height 5.89m (19' 3") @ 28°
- Minimum discharge height 4.32m (14' 2")
- Variable speed control
- Hydraulic folding





PHOENIX 3300



OVERSIZE CONVEYOR

- 1200mm (47") 3 ply chevron belt, 4 + 2 covers
- Full length skirting
- Variable speed control
- Hydraulic folding
- Variable operating angle 10° - 28°
- Discharge height 4.16m (13' 7") @ 28°
- Minimum discharge height 2.15m (7' 1")





PHOENIX 3300



BOGIE

- 3 axles, 10 studs
- Suspension type leaf spring
- Super single c/w 445/65 R22.5 tyres
- Fifth wheel connection
- Airbrakes





PHOENIX 3300



↓ OPTIONS

- Remote control tipping grid 100mm (4")
- Remote control tipping grid 150mm (6")
- 2 Deck vibrating grid c/w tri-axle bogie
- Tipping grid discharge chute
- Heavy duty woven mesh
- Punch plate
- Different colour paint
- Electric/Hydraulic - 75kW & 50kW electric motor drive
- Powerscreen Pulse





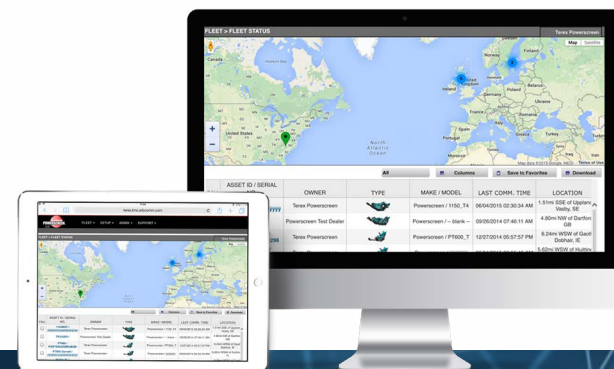
PHOENIX 3300




POWERSCREEN PULSE

RECORD, DISPLAY AND ANALYSE DATA: HIGH EFFICIENCY THROUGH PRECISE INFORMATION

Available online anywhere and at any time: comprehensive information on the GPS location, start and stop times, fuel consumption, tonnages, cone settings, wear ratings, operating hours, maintenance status, and much more.




**AVAILABLE
ANYWHERE
AND AT ANY TIME**


**DASHBOARD
DISPLAY**


**FLEET
OVERVIEW**


**WEEKLY REPORT
DIRECT TO YOUR
INBOX**


**GPS: MACHINE
TRACKING**


**REPORTING
UTILISATION, PERFORMANCE
& PART SPECIFIC**

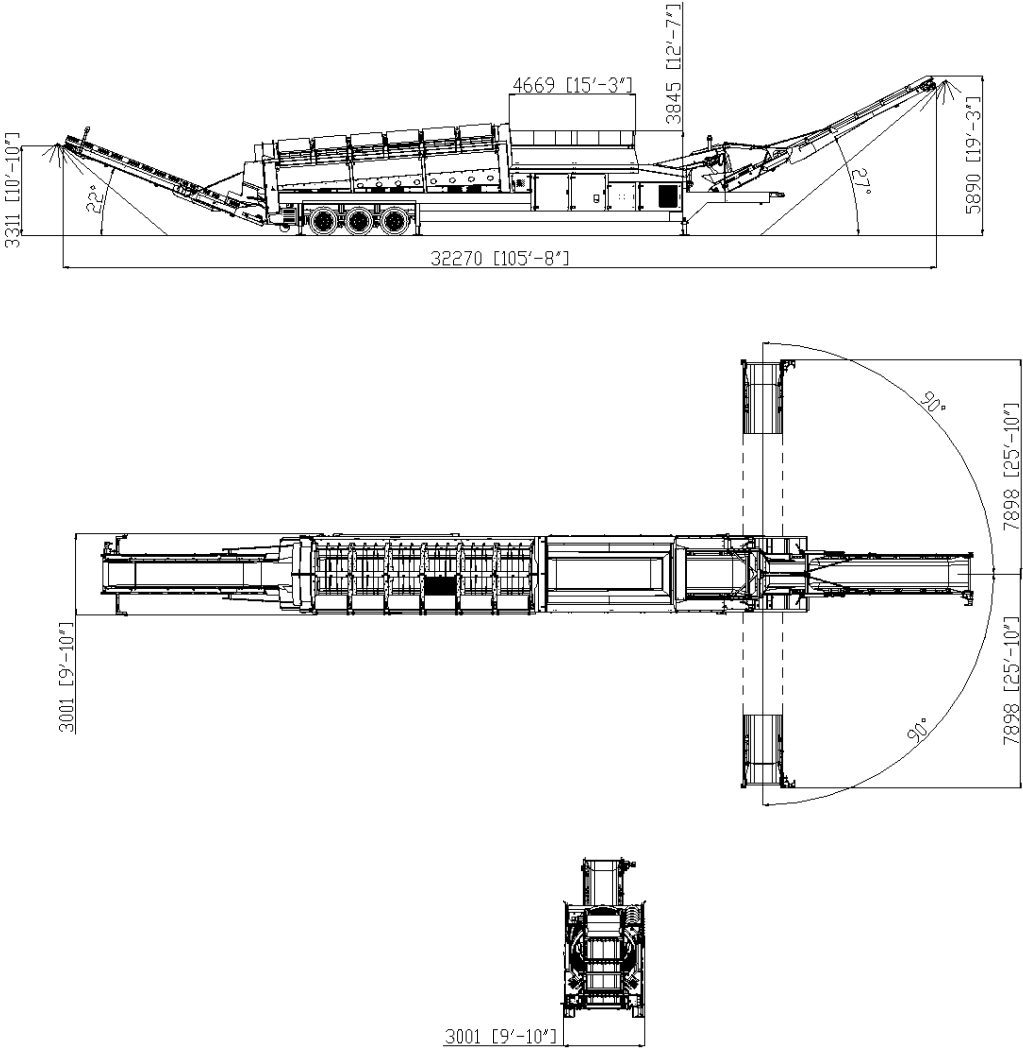


PHOENIX 3300



DIMENSIONS

Figure 1: Phoenix 3300
Working Position



MORE DIMENSIONS OVERLEAF



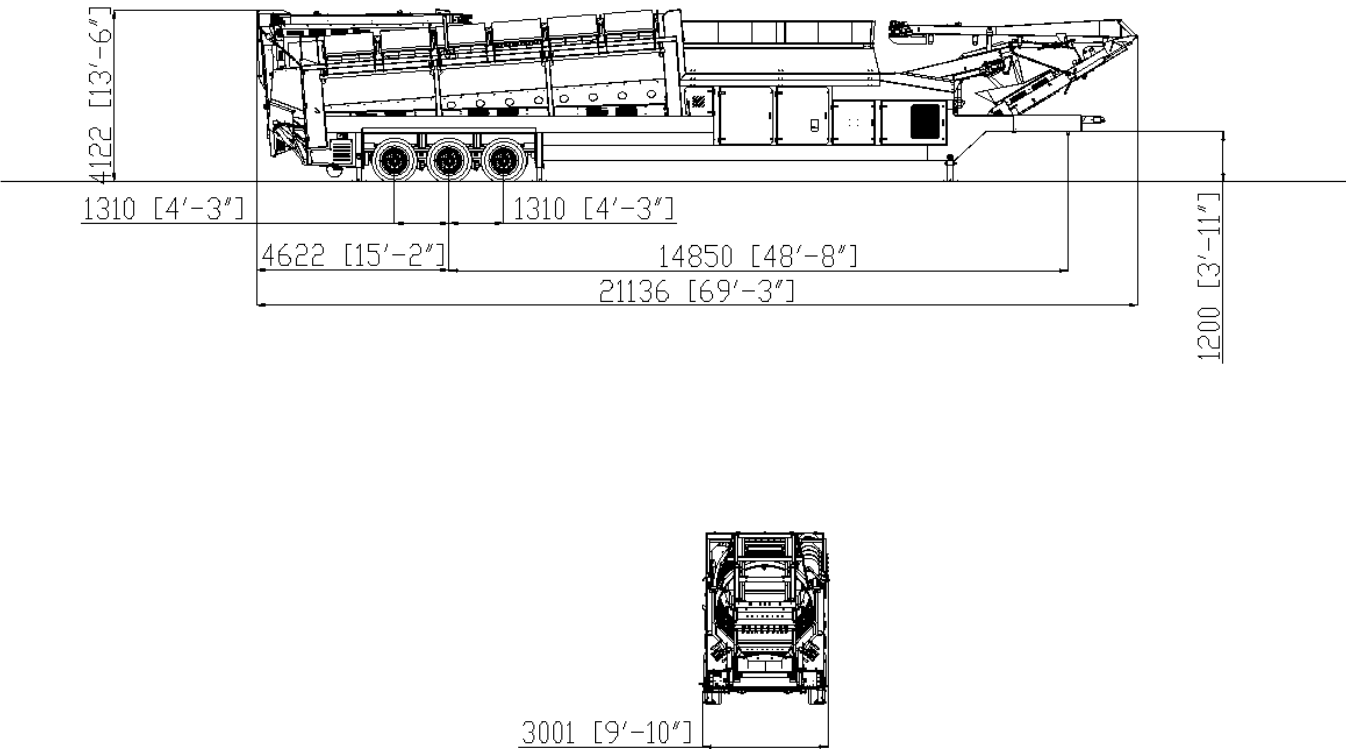
PHOENIX 3300



DIMENSIONS

Figure 2: Phoenix 3300
Transport Position

Please note: It is the dealers responsibility to ensure the plant is road legal in their region.





Powerscreen equipment complies with CE requirements.

Please consult Powerscreen if you have any other specific requirements in respect of guarding, noise or vibration levels, dust emissions, or any other factors relevant to health and safety measures or environmental protection needs. On receipt of specific requests, we will endeavour to ascertain the need for additional equipment and, if appropriate, quote extra to contract prices.

All reasonable steps have been taken to ensure the accuracy of this publication, however due to a policy of continual product development we reserve the right to change specifications without notice.

It is the importers' responsibility to check that all equipment supplied complies with local legislation regulatory requirements.

Plant performance figures given in this brochure are for illustration purposes only and will vary depending upon various factors, including feed material gradings and characteristics. Information relating to capacity or performance contained within this publication is not intended to be, nor will be, legally binding.

GET IN TOUCH

Dungannon

200 Coalisland Road, Dungannon,
Co Tyrone, BT71 4DR, Northern Ireland
Tel: +44 (0) 28 87 718 500
Fax: +44 (0) 28 87 747 231

Louisville

11001 Electron Drive,
Louisville, Kentucky, 40299 USA
Tel: +1 502 736 5200
Fax: +1 502 736 5202

