

# POWERSCREEN® PHOENIX 1600

TRACKED TROMMEL SCREEN



TECHNICAL SPECIFICATION - REV 5 01/05/2025





## PHOENIX 1600 TRACKED



# OVERVIEW

### SPECIFICATION

Transport	Total Weight	21,100kg (46,500lbs) - depending on options
	Length	16.1m (52' 10")
	Height	3.42m (11' 3")
Working	Width	2.6m (9' 2")
	Length	24.8m - 26.3m (81' 4" - 86' 3") - depending on conveyor angle
	Width	15m - 16.8m (49' 3" - 55' 1") - depending on conveyor angle
	Feed Height	3.5m (11' 6")

### Innovatively designed to provide excellent fuel efficiency and low operating costs.

The Powerscreen Phoenix 1600 has been innovatively designed to provide excellent fuel efficiency and low operating costs, whilst also reducing emissions and noise levels due to the machine running at a low engine RPM. With a 4.9m (16') x 1.54m (5') drum, unrivalled production throughput is guaranteed due to the screening area, the largest in its class. Highly versatile the Phoenix 1600 can easily screen a variety of material including topsoil, compost, sand and gravel, wood chip and C&D waste. Woven mesh or heavy duty punch plate panels can be fitted to the drum ensuring all application requirements are met.

The 180° swivel fines conveyor, with a discharge height of 5.9m (19'4") results in the creation of impressive stockpiles. This swivel feature can

be controlled via a remote while the machine is in operation, minimising downtime. The powerful four wheel drive system with high performance friction grip wheels is used to turn the trommel drum giving operators the ability to run bi-directionally.

Powered by a Caterpillar C4.4 engine (Tier 4 Final or Constant Speed) the powerful hydraulics and intelligent feed control system ensure the Phoenix 1600 is always working at its optimum. The low engine RPM coupled with the fuel save (stand-by) mode guarantees peak efficiency.



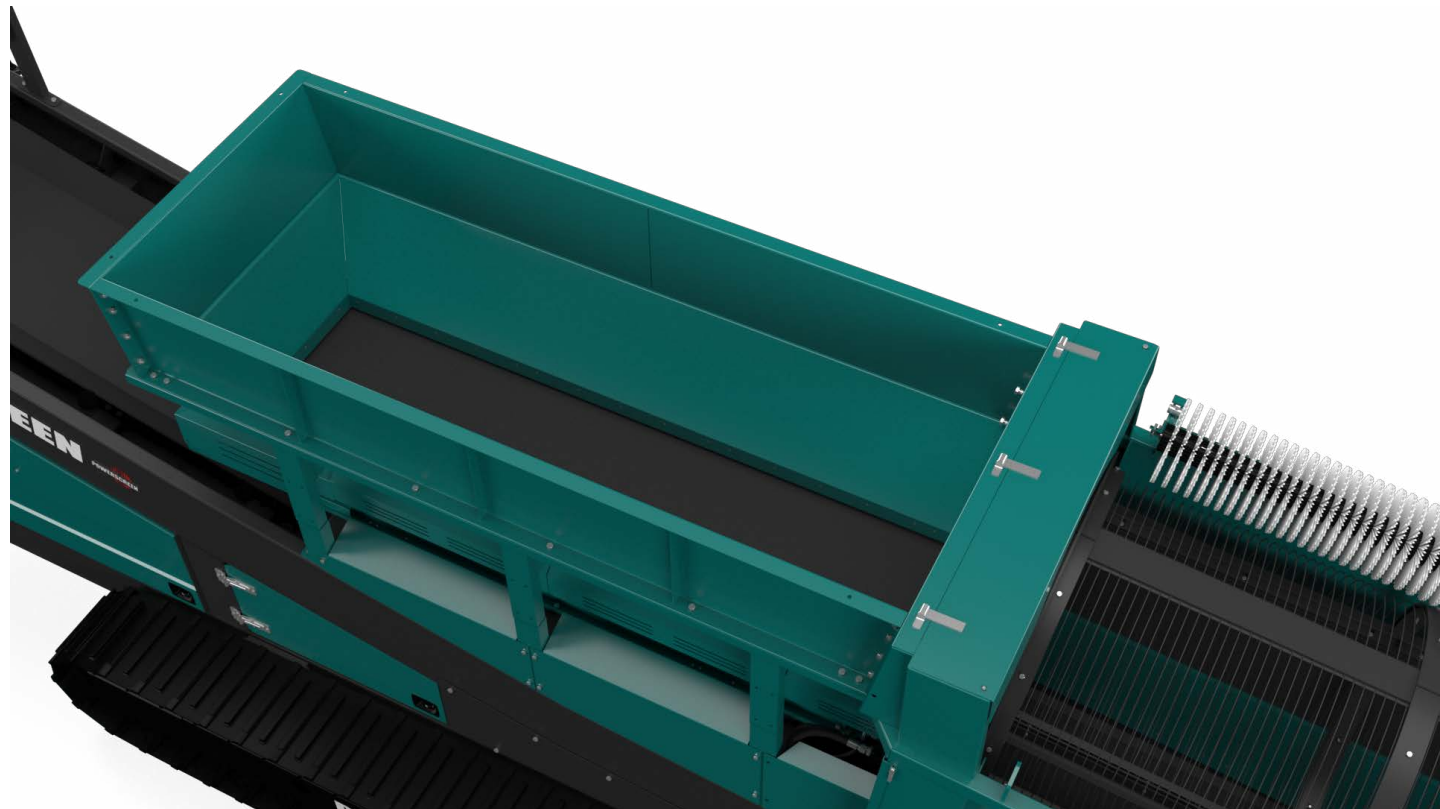


## PHOENIX 1600 TRACKED



## HOPPER AND BELT FEEDER

- 4.3m<sup>3</sup> (5.6yd<sup>3</sup>) capacity
- 3.7mm (12' 2") hopper length
- 900mm (35") 3 ply plain belt, 4 + 2 covers
- Variable speed c/w intelligent feed control
- Hopper extensions



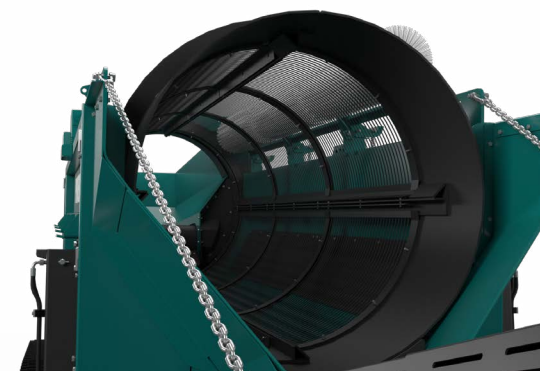


## PHOENIX 1600 TRACKED



### ↓ DRUM

- 4.9m (16') Length
- 1.54m (5') Diameter
- 19m<sup>2</sup> (205ft<sup>2</sup>) screening area
- Friction four wheel drum drive system
- Variable speed control
- Mesh or Punch plate panels
- Inclined drum (2-5°)







## PHOENIX 1600 TRACKED



## POWER UNIT & HYDRAULICS

- Engine:
  - CAT C4.4 97kW (130HP) Tier 3
  - CAT C4.4 82kW (110HP) Tier 4 Final (USA & EU)
  - CAT C4.4 102kW (137HP) Stage V
- Fuel capacity: 327L (86 US gal)
- Hydraulic capacity: 425L (112 US gal)
- Excellent service access
- Powerful hydraulics



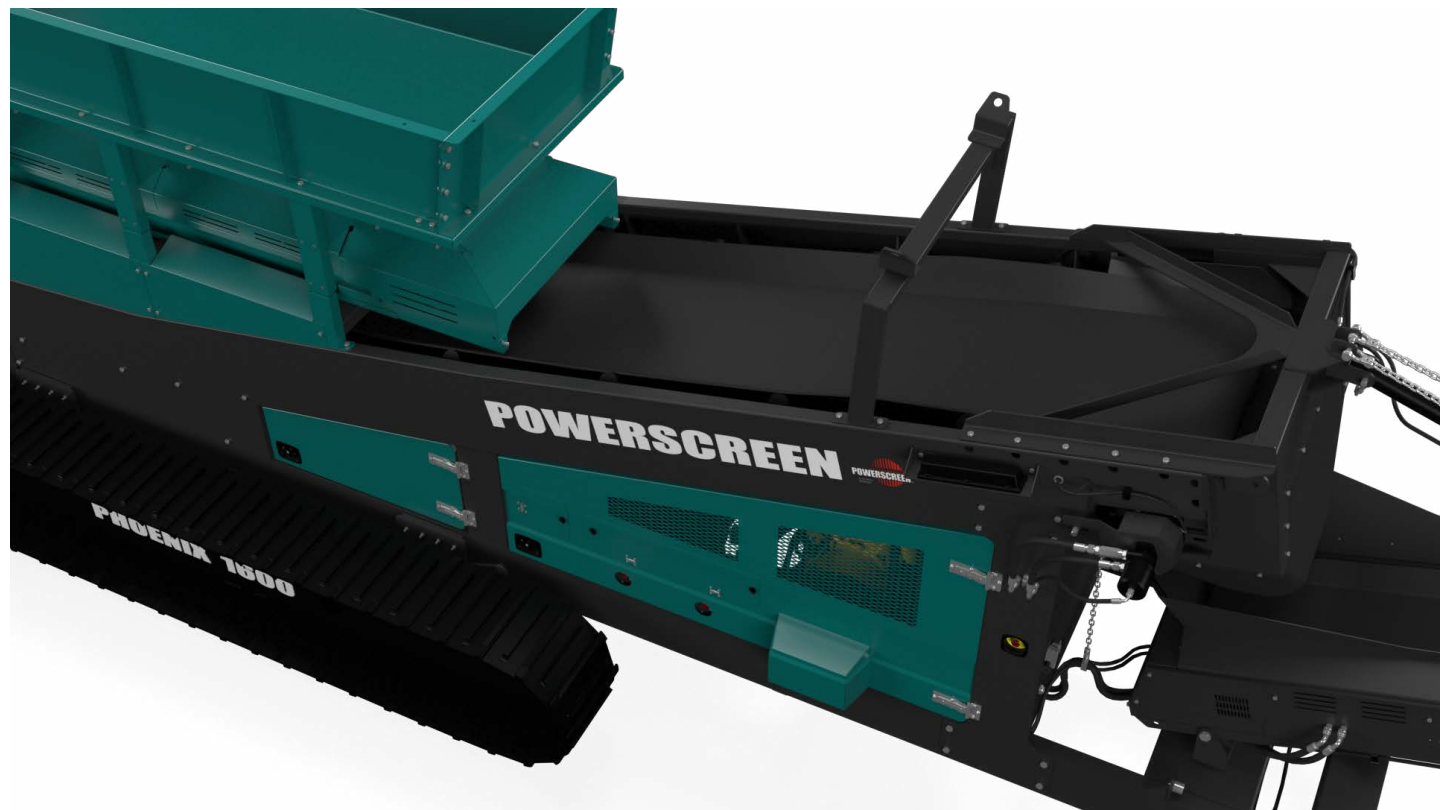


## PHOENIX 1600 TRACKED



## COLLECTION CONVEYOR

- 1200mm (47") 3 ply plain belt, 4 + 2 covers
- Length: 11400mm (37' 5")



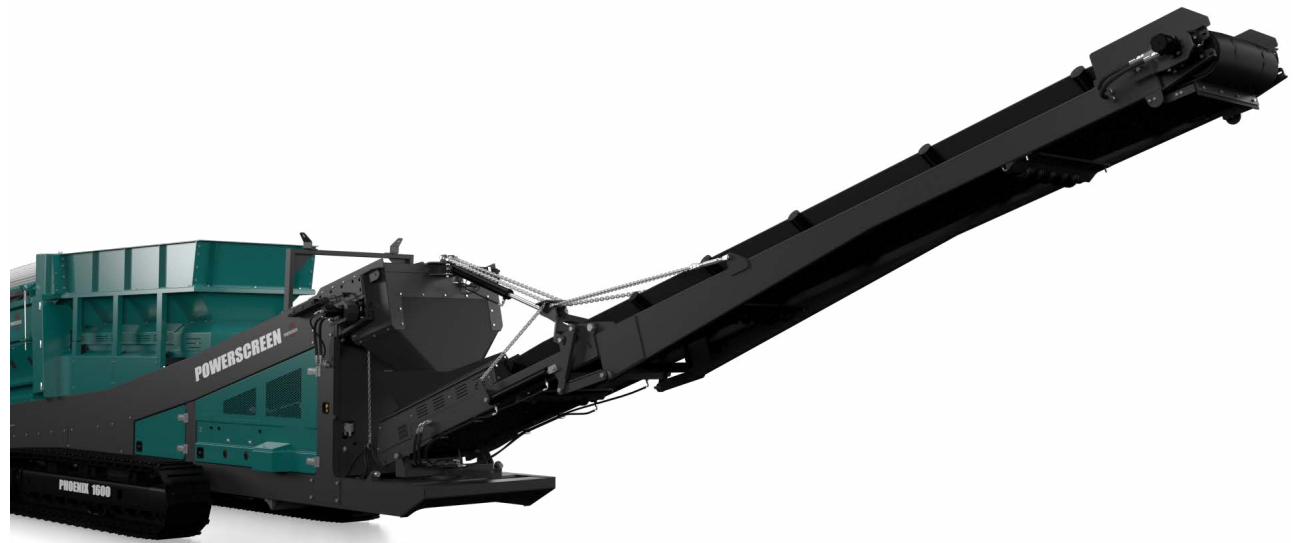


## PHOENIX 1600 TRACKED



# FINES DISCHARGE CONVEYOR

- Width: 800mm (32") 3 ply plain belt, 5 + 1.5 covers
- Length: 8700mm (28' 7")
- 180 Degree radial
- Discharge height 5.65m (18' 6") @ 30°





## PHOENIX 1600 TRACKED



# ↓ OVERSIZE CONVEYOR

- Width: 800mm (32") 3 ply chevron belt, 3 + 1.5 covers
- Length: 5400mm (17' 9")
- Variable speed control
- Discharge height 3.59m (11' 9") @ 30°





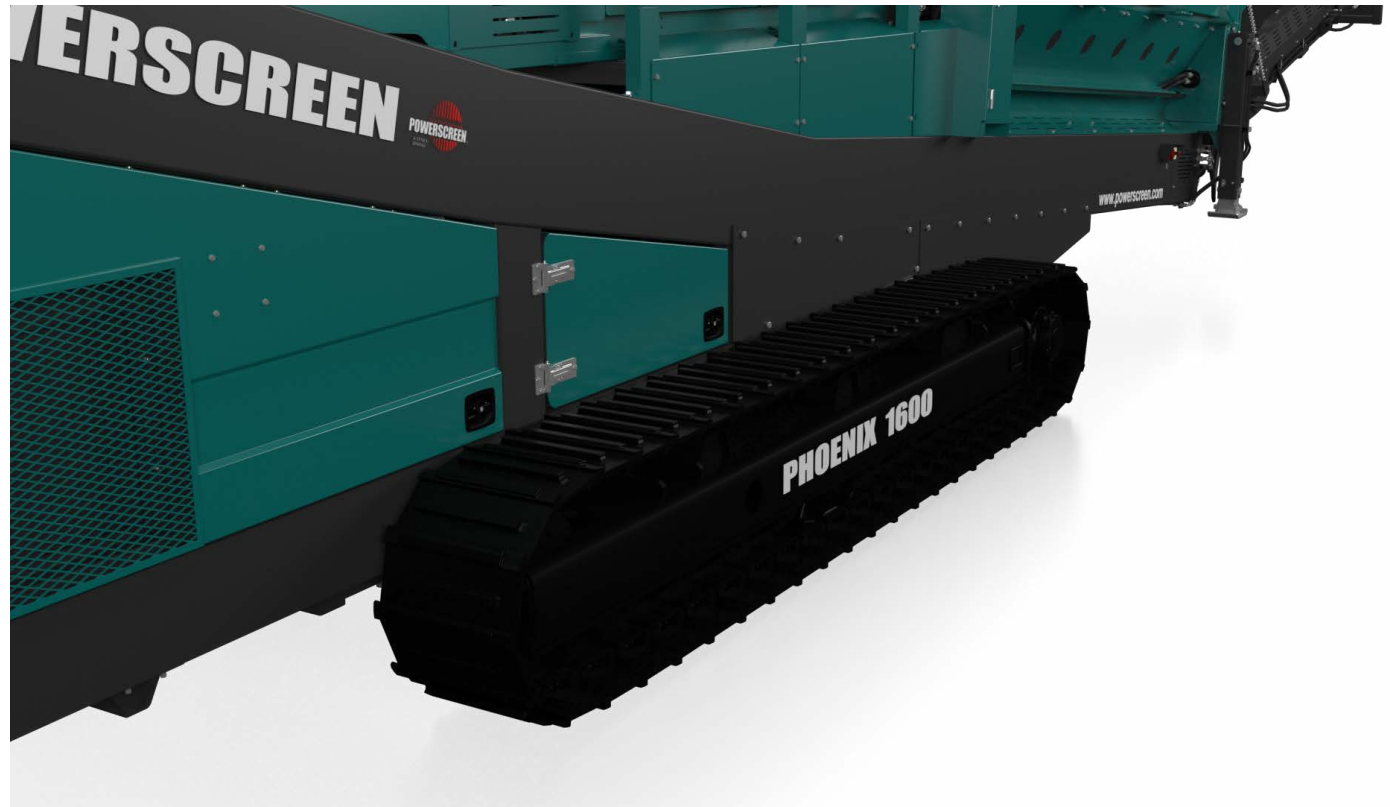


## PHOENIX 1600 TRACKED



## TRACKS

- Bolt on tracks
- 400mm (16") shoe
- 4.3m (13' 1") sprocket centres





## PHOENIX 1600 TRACKED



## OPTIONS

- Tipping grid
- Tipping grid discharge chute
- Heavy duty woven mesh
- Punch plate
- Additional remote control for tracking
- Different colour paint
- Powerscreen Pulse





## PHOENIX 1600 TRACKED

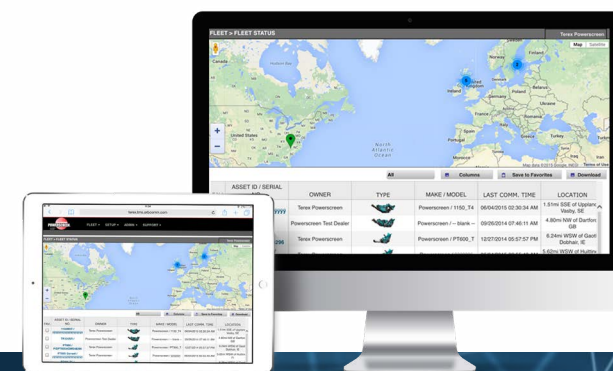


# POWERSCREEN PULSE

## RECORD, DISPLAY AND ANALYSE DATA:

HIGH EFFICIENCY THROUGH PRECISE INFORMATION

Available online anywhere and at any time: comprehensive information on the GPS location, start and stop times, fuel consumption, tonnages, cone settings, wear ratings, operating hours, maintenance status, and much more.



  
**AVAILABLE  
ANYWHERE  
AND AT ANY TIME**

  
**DASHBOARD  
DISPLAY**

  
**FLEET  
OVERVIEW**

  
**WEEKLY REPORT  
DIRECT TO YOUR  
INBOX**

  
**GPS: MACHINE  
TRACKING**

  
**REPORTING  
UTILISATION, PERFORMANCE  
& PART SPECIFIC**

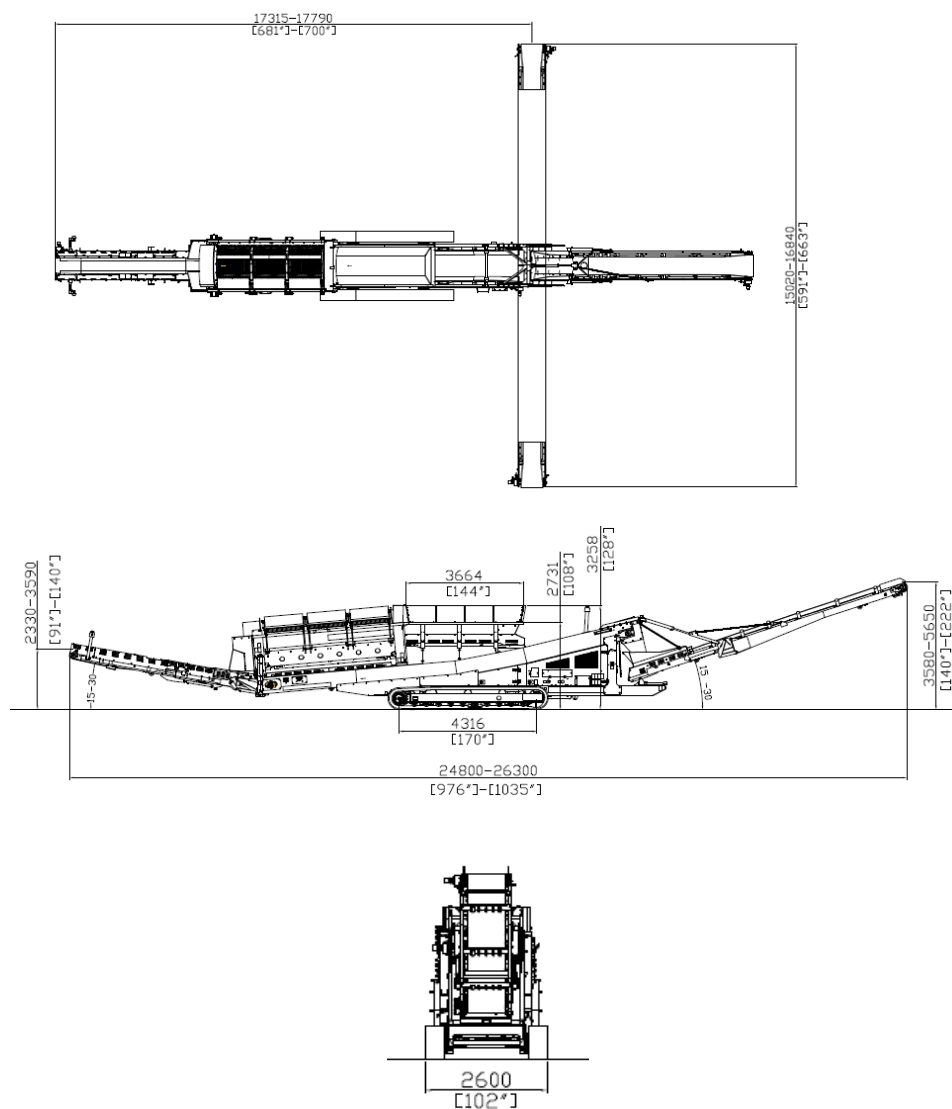


## PHOENIX 1600 TRACKED



## DIMENSIONS

Figure 1: Phoenix 1600  
Working Position



MORE DIMENSIONS OVERLEAF

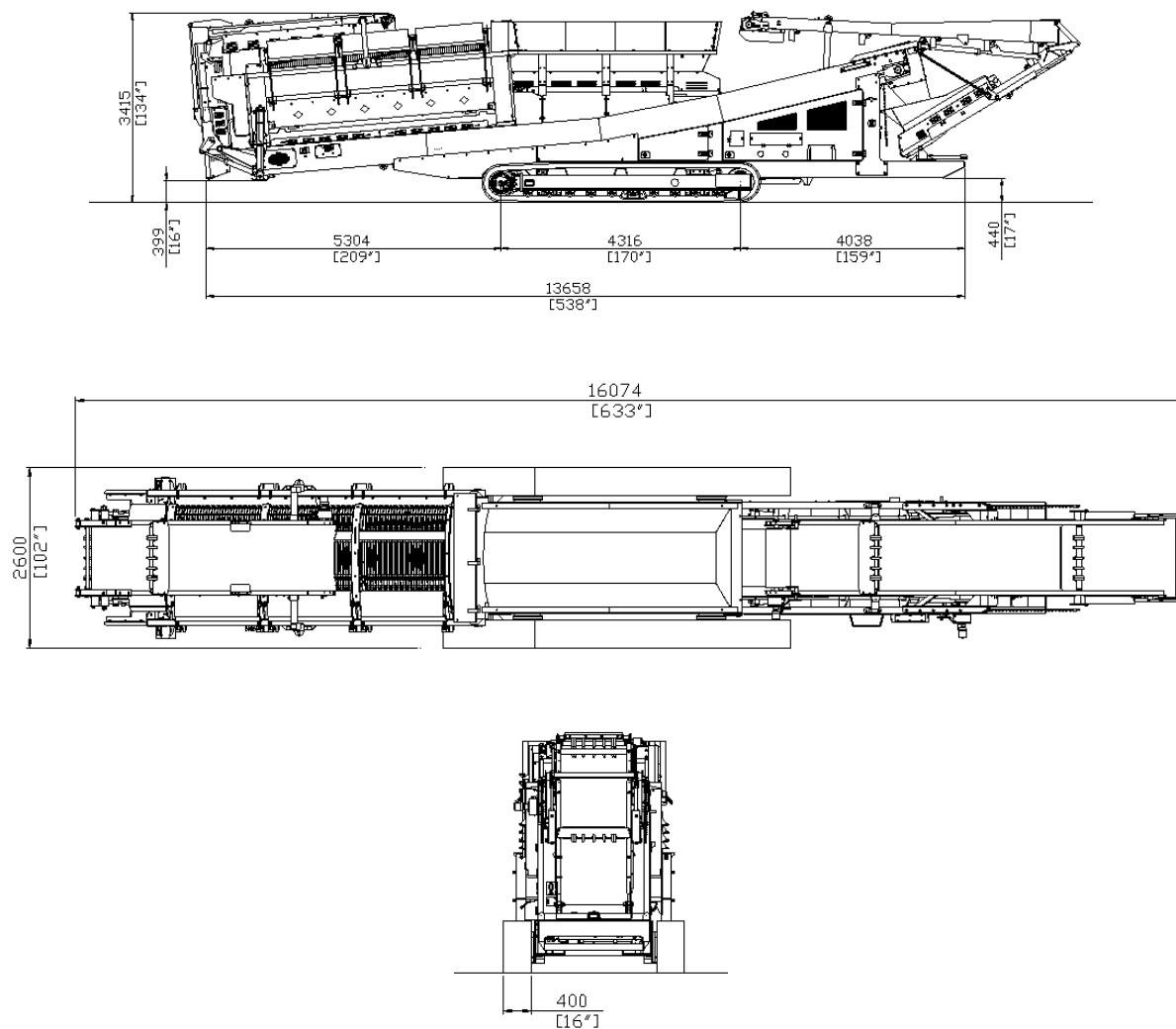


## PHOENIX 1600 TRACKED



## DIMENSIONS

Figure 2: Phoenix 1600  
Transport Position







### **Powerscreen equipment complies with CE requirements.**

Please consult Powerscreen if you have any other specific requirements in respect of guarding, noise or vibration levels, dust emissions, or any other factors relevant to health and safety measures or environmental protection needs. On receipt of specific requests, we will endeavour to ascertain the need for additional equipment and, if appropriate, quote extra to contract prices.

All reasonable steps have been taken to ensure the accuracy of this publication, however due to a policy of continual product development we reserve the right to change specifications without notice.

It is the importers' responsibility to check that all equipment supplied complies with local legislation regulatory requirements.

Plant performance figures given in this brochure are for illustration purposes only and will vary depending upon various factors, including feed material gradings and characteristics. Information relating to capacity or performance contained within this publication is not intended to be, nor will be, legally binding.

## **GET IN TOUCH**

### **Dungannon**

200 Coalisland Road, Dungannon,  
Co Tyrone, BT71 4DR, Northern Ireland  
Tel: +44 (0) 28 87 718 500  
Fax: +44 (0) 28 87 747 231

### **Louisville**

11001 Electron Drive,  
Louisville, Kentucky, 40299 USA  
Tel: +1 502 736 5200  
Fax: +1 502 736 5202



# APPENDIX 1 - ENGINE OPTIONS – Powerunit options that may be fitted in place of technical specification offering subject to availability

## Screens – Tier 4 Final

**CAT C4.4 82kW (110hp) @ 2200rpm as per Chieftain 1400, Chieftain 1500, Chieftain 2100X 2 deck, Chieftain 2200 2 deck and Warrior 1800**

Option 1.) CAT C3.6 82kW (110hp) @ 2200rpm

Option 2.) CAT C4.4 102kW (137hp) @ 2200rpm

**CAT C4.4 98kW (131hp) @ 2200rpm as per Chieftain 2100X 3 deck and Chieftain 2200 3 deck**

Option 1.) CAT C4.4 102kW (137hp) @ 2200rpm

**CAT C4.4 82kW (110hp) @ 1800rpm as per Chieftain 1700X and Warrior 1400X**

Option 1.) CAT C3.6 82kW (110hp) @ 1800rpm

Option 2.) CAT C4.4 98kW (131hp) @ 1800rpm

## Screens – Stage V

**CAT C4.4 102kW (137hp) @ 2200rpm as per Chieftain 1400, Chieftain 1500, Chieftain 2100X, Chieftain 2200 and Warrior 1800**

Option 1.) CAT C3.6 82kW (110hp) @ 2200rpm

Option 2.) JCB 4.8 81kW (109hp) @ 2200rpm

Option 3.) JCB 4.8 97kW (130hp) @ 2200rpm

Option 4.) Deutz TD3.6 100kW (134hp) @ 2200rpm

**CAT C4.4 98kW (131hp) @ 1800rpm as per Chieftain 1700X, Warrior 1400X and Warrior 2100**

Option 1.) CAT C3.6 82kW (110hp) @ 1800rpm

Option 2.) CAT C4.4 98kW (131hp) @ 1800rpm

Option 3.) JCB 4.8 80kW (108hp) @ 1800rpm

Option 4.) Deutz TD3.6 92kW (123hp) @ 1800rpm

