

# POWERSCREEN® CHIEFTAIN 1400

2 DECK INCLINE SCREEN



TECHNICAL SPECIFICATION - REV 18 01/05/2025





## CHIEFTAIN 1400



# OVERVIEW

## SPECIFICATION

14ft Hopper (with grid) track	
<b>Total weight:</b>	24,970kg (55,049lbs)
<b>Transport</b>	Length 15.55m (51')
	Width 3m (9' 10")
	Height 3.4m (11' 2")
<b>Working</b>	Length 16.64m (54' 7")
	Width 17.3m (56' 8")
	Height 5.12m (16' 10")
<b>Screenbox:</b>	3.3m x 1.5m (11' x 5')
<b>Power unit:</b>	Diesel - Hydraulic / Electric - Hydraulic (optional)
<b>Plant Colour:</b>	RAL 5021, RAL 7024 & RAL 9005

(Weights & dimensions are approximate base unit values)

## FEATURES & BENEFITS

- High capacity up to 400 tph / 441 US tph (depending on media sizes & material type)
- Maximum feed size 150mm (6")
- Engine protection shutdown system
- Power unit featuring a transverse engine arrangement to aid access & serviceability
- Heavy duty single shaft incline screenbox with adjustable angle
- Hydraulic screen tensioning
- Maximum mobility with heavy duty, low ground pressure crawler tracks
- Removable heavy duty pendant remote control system
- Quick set up time
- High performance hydraulic system - cast iron pumps & motors complete with hydraulic cooler
- Angle adjustable tipping grid with radio control double acting tipping grid rams
- Low profile double deck vibrating grid option with radio remote control tipping grid, angle adjustable & fully riveted construction
- Hydraulically folding conveyors for transport
- Fines conveyor drop down facility to aid bottom deck mesh access
- Powerscreen Pulse telemetry as standard

## APPLICATIONS



### Aggregate

Sand & gravel  
Blasted rock  
River rock



### Recycling

Top soil  
C&D waste  
Composted materials  
Wood by-products  
Overburden  
Foundry waste



### Mining

Processed ores  
Processed minerals



## CHIEFTAIN 1400



## HOPPER & GRID

<b>Target area:</b>	4.75m (15' 7") long x 2m (6' 7") wide
<b>Grid aperture:</b>	108mm (4.3")
<b>Hopper capacity with grid:</b>	6.7m <sup>3</sup> (8.75 cu. yd.)
<b>Hopper capacity without grid:</b>	6m <sup>3</sup> (7.8 cu. yd.)
<b>Feed in height with grid:</b>	3.89m (12' 9") (rear)
<b>Feed in height without grid:</b>	2.84m (9' 3") (rear)
Adjustable angle tipping grid with integral loading and wing plates	





## CHIEFTAIN 1400



# SCREENBOX

3.3m x 1.5m (11' x 5') 2 deck incline screen  
Highly aggressive screen drive  
Grease filled 4 bearing screenbox

3.3m x 1.5m (11' x 5') top deck  
3m x 1.5m (10' x 5') bottom deck

Hydraulic screen angle adjustment: 27° - 37°  
Combination side & end tensioned top deck  
End tensioned bottom deck  
Galvanised maintenance platforms on 3 sides of the screenbox  
Hydraulic screen tensioning on end tensioned sections  
**Speed:** 1140rpm **Throw:** 6mm







## CHIEFTAIN 1400



# CONVEYORS

### FEED CONVEYOR

1050mm (42") wide feed conveyor with direct drive system & hydraulic variable speed control

4.11m (13' 6") drum centres

350mm (13.7") drum diameter (drive)

320mm (12.6") drum diameter (tail)

### MAIN CONVEYOR

1050mm (42") 3 ply plain belt

8.6m (28' 3") drum centres

286mm (11.3") drum diameter (drive)

270mm (10.6") drum diameter (tail)

Hydraulically adjustable conveyor, fully skirted & sealed

Fixed speed





## CHIEFTAIN 1400



# CONVEYORS

### FINESIZE - TAIL CONVEYOR

1200mm (48") wide 3 ply plain belt

5.91m (19' 5") drum centres

286mm (11.3") drum diameter (drive)

270mm (10.6") drum diameter (tail)

3.93m (12' 11") stockpile height

90m<sup>3</sup> (118 cu. yd.) stockpile volume

Fixed speed

Hydraulically folding

Chevron belt as option

Variable to 24°





## CHIEFTAIN 1400



# CONVEYORS

### MIDSIZE & OVERSIZE SIDE CONVEYORS

650mm (26") wide 3 ply chevron belt

9.67m (31' 8") drum centres

286mm (11.3") drum diameter (drive)

270mm (10.6") drum diameter (tail)

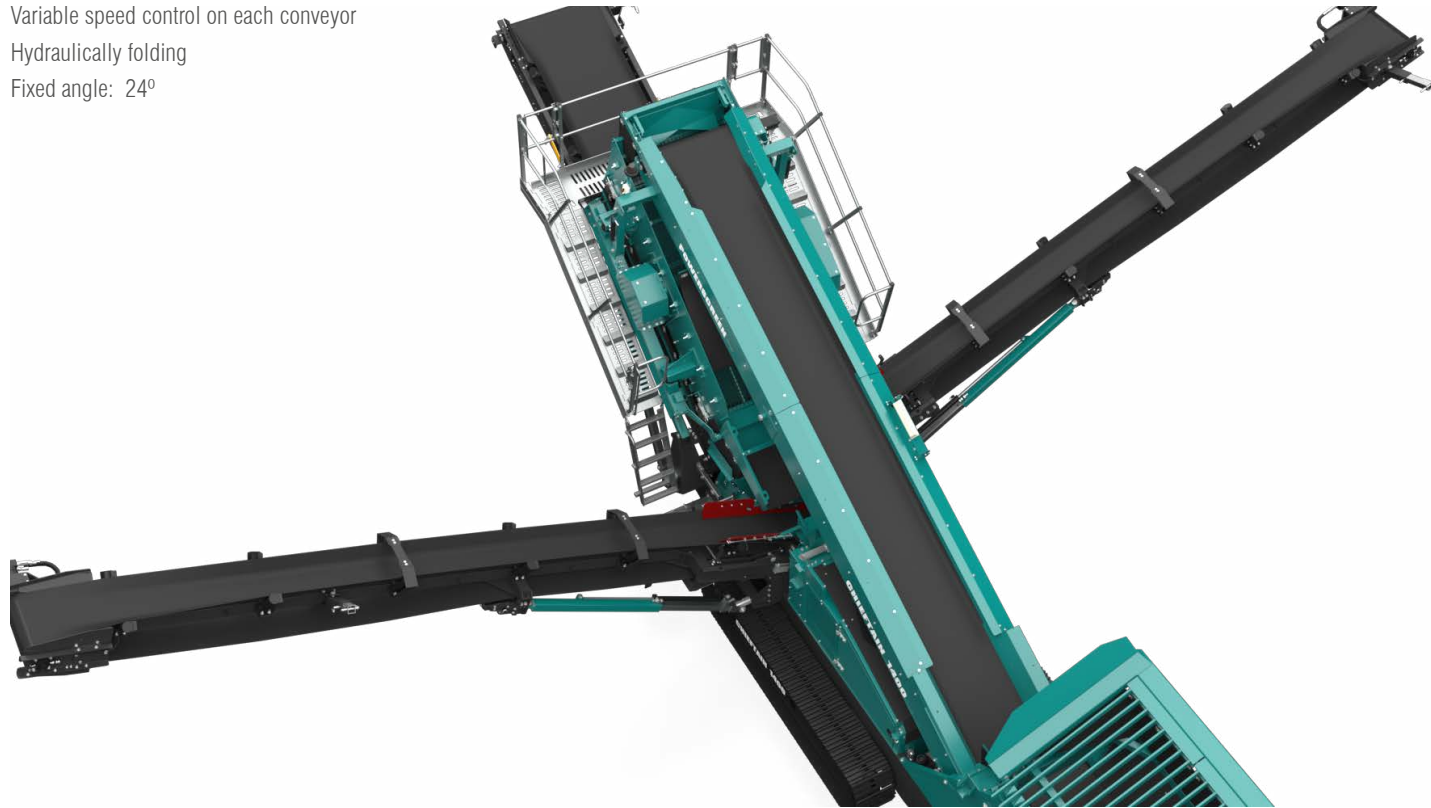
4.72m (15' 6") stockpile height

154m<sup>3</sup> (201 cu. yd.) stockpile volume

Variable speed control on each conveyor

Hydraulically folding

Fixed angle: 24°





## CHIEFTAIN 1400



# POWER UNIT & HYDRAULICS

### Engine Tier 3 Equivalent:

CAT C4.4

### Performance:

83 kW (111.3hp) @ 2200rpm

### Engine Tier 4 / Stage IV:

CAT C3.6

### Performance:

82 kW (110hp) @ 2200rpm

### Engine Stage V:

Cat C3.6

### Performance:

82 kW (110hp) @ 2200rpm

### Tank Capacities:

Fuel: 336 L (88 US Gal)

Hydraulic oil Tier 3: 564 L (149 US Gal)

Hydraulic oil Tier 4/Stage V: 450 L (118 US Gal)

### Pumps:

Flywheel pump: Cast iron tandem 33/33cc/rev

PTO pump: Cast iron triple 23/23/14cc/rev

### Motors:

Belt feeder: Cast iron 160cc/rev

Main conveyor: Cast iron 630cc/rev

Tail conveyor: Cast iron 500cc/rev

Side conveyors: Cast iron 400cc/rev

Screen motor: Cast iron 56cc/rev







## CHIEFTAIN 1400



## ↓ TRACKS

**Track width:** 500mm (1' 8")

**Sprocket centres:** 2956mm (9'8")

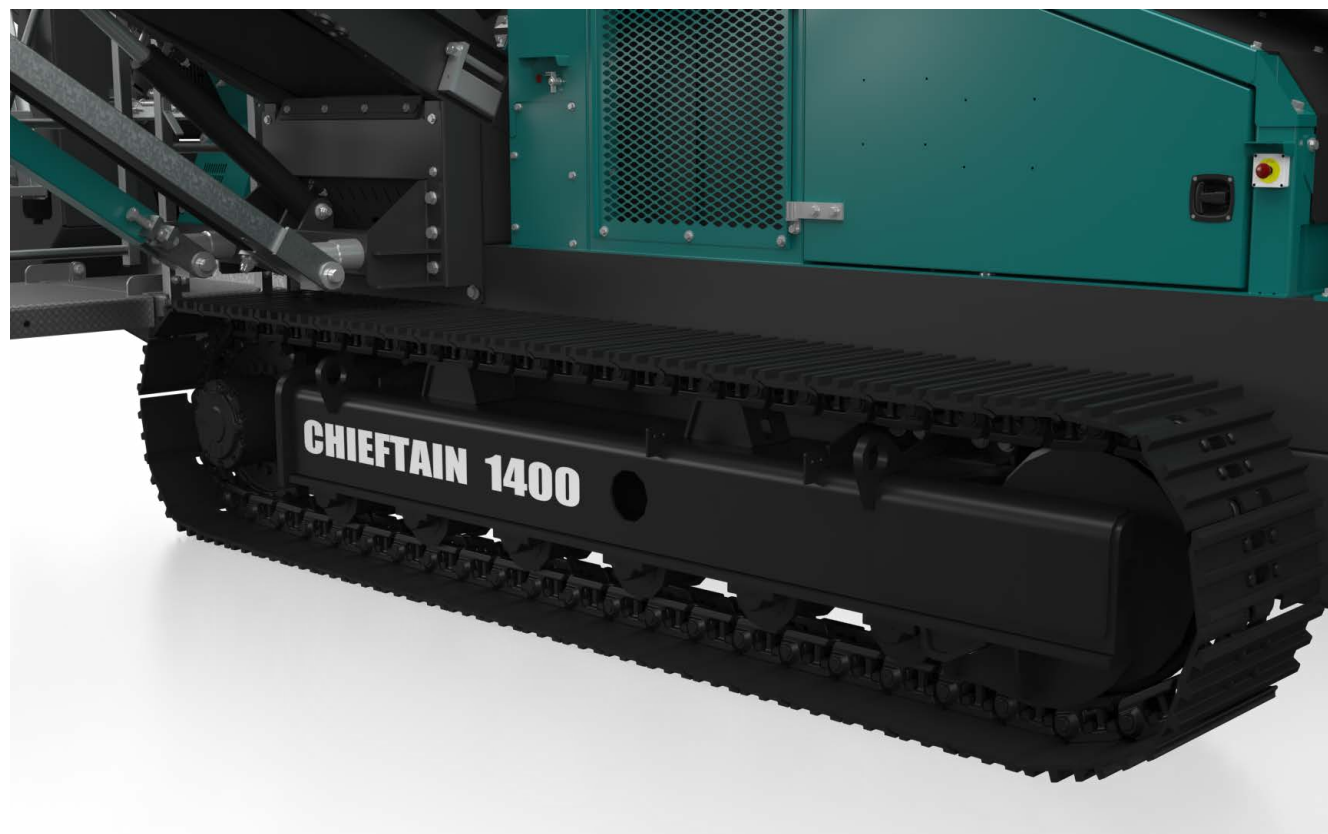
**Gradability degrees:** 30.34°

**Gearbox ratio:** 1:154

**Hydraulic motor:** 50.9cc/rev

**Approximate speed:** 0.9kph (0.56mph)

**Total flow per track:** 69 Lpm (approx.)

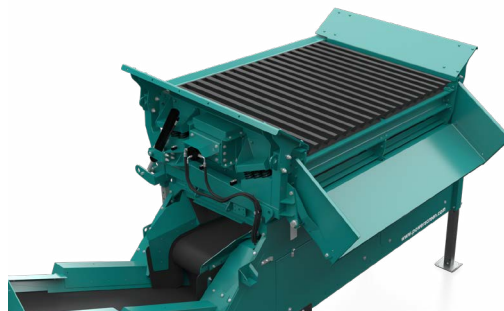




## CHIEFTAIN 1400



## ↓ OPTIONS



### DOUBLE DECK VIBRATING GRID

#### Target area:

3.91m (12' 10") long x 2.42m (7' 11") wide

#### Bottom deck screen size:

2 of 1.9m (6' 3") x 1.5m (4' 11")

**Working angle:** 10° - 20° (hydraulically adjustable)

**Tip angle:** 45° max

**Motor:** 56cc/rev

**Circuit:** Run in series after to main conveyor circuit

**Minimum feed in height with grid (rear):** 3.8m (12' 6") with grid

**Increase in machine weight:** +3,750kg (8,267lbs)



### DUAL POWER

#### Dual Power System:

2 of electric motors: 30 kW (40hp) & 30 kW (40hp) Diesel engine  
Integrated control system

This controls either diesel-hydraulic or electric-hydraulic functions  
Note: This option may alter transport dimensions and feed access.  
For further details please contact engineering for detailed drawings and dimensions.



## CHIEFTAIN 1400



## ↓ OPTIONS

### OTHER OPTIONS

- Custom colour machine
- DDVG (Double deck vibrating grid)
- Adjustable hopper door
- Hopper wear plates
- Anti-roll back on main conveyor
- Wear resistant lined spreader plate
- Dual Power
- Hydraulic oil Grade 68
- Extra coupling facility - not available with Dual Power
- Quick release wedge screen tensioning system for side tensioned section
- Side tensioned top deck
- Bottom deck self cleaning flexible mesh
- Crawler tracks with radio remote





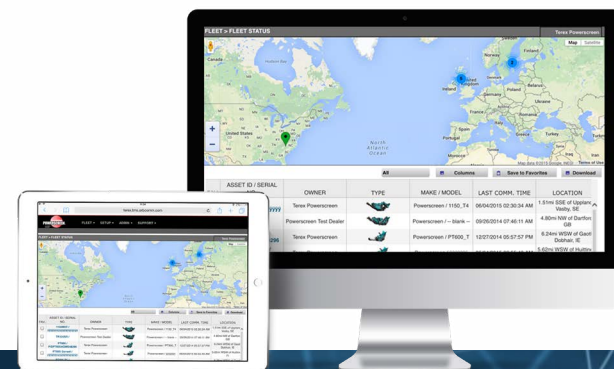
**CHIEFTAIN 1400**




# **POWERSCREEN PULSE**

## **RECORD, DISPLAY AND ANALYSE DATA:** HIGH EFFICIENCY THROUGH PRECISE INFORMATION

Available online anywhere and at any time: comprehensive information on the GPS location, start and stop times, fuel consumption, tonnages, cone settings, wear ratings, operating hours, maintenance status, and much more.



  
**AVAILABLE  
ANYWHERE  
AND AT ANY TIME**

  
**DASHBOARD  
DISPLAY**

  
**FLEET  
OVERVIEW**

  
**WEEKLY REPORT  
DIRECT TO YOUR  
INBOX**

  
**GPS: MACHINE  
TRACKING**

  
**REPORTING  
UTILISATION, PERFORMANCE  
& PART SPECIFIC**







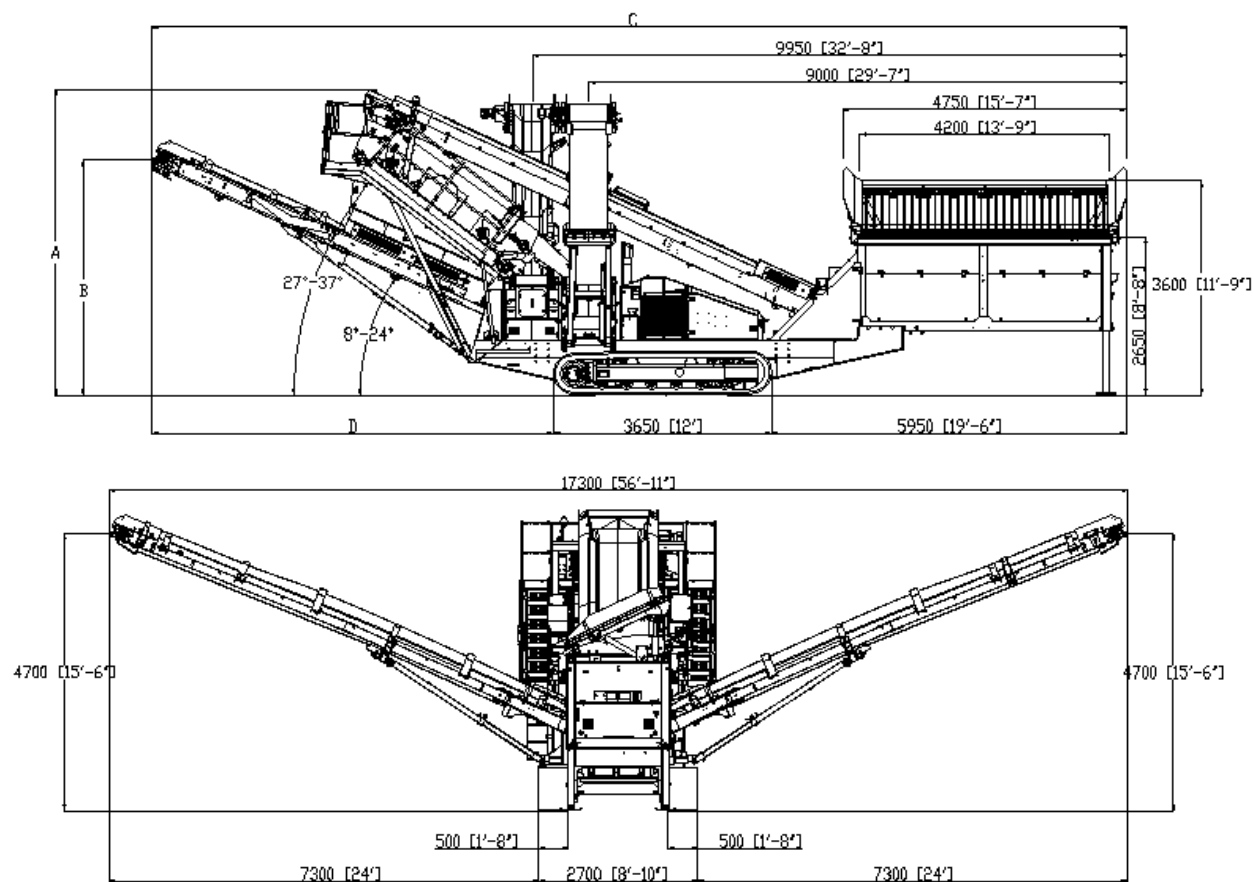
## CHIEFTAIN 1400



## DIMENSIONS

DIMENSION (MM)	27 DEG	30 DEG	33 DEG	37 DEG
A	4759	4871	4974	5112
B	3144	3144	3926	3926
C	16637	16637	16333	16333
D	7037	7037	6733	6733

Figure 1: Chieftain 1400 Track - Working Position



MORE DIMENSIONS OVERLEAF

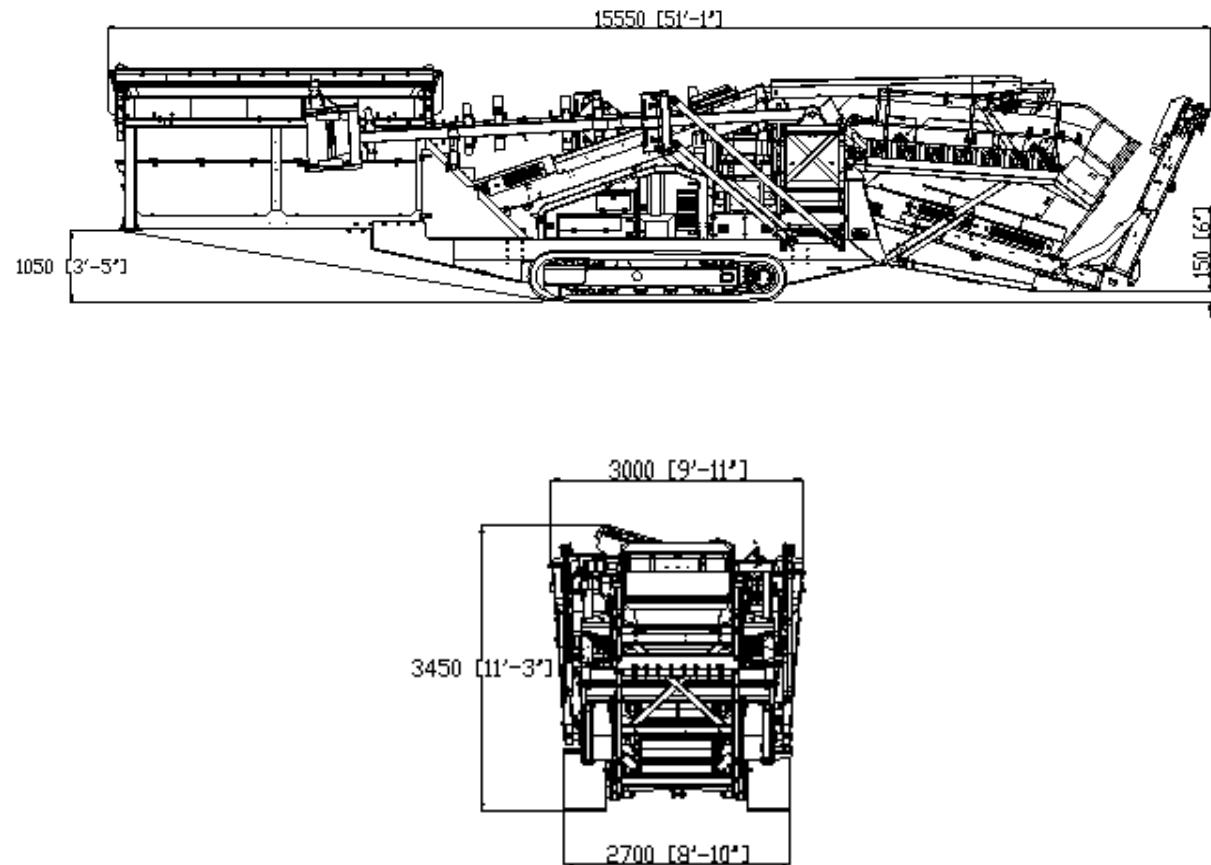


## CHIEFTAIN 1400



## DIMENSIONS

Figure 2: Chieftain 1400 Track - Transport Position



MORE DIMENSIONS OVERLEAF



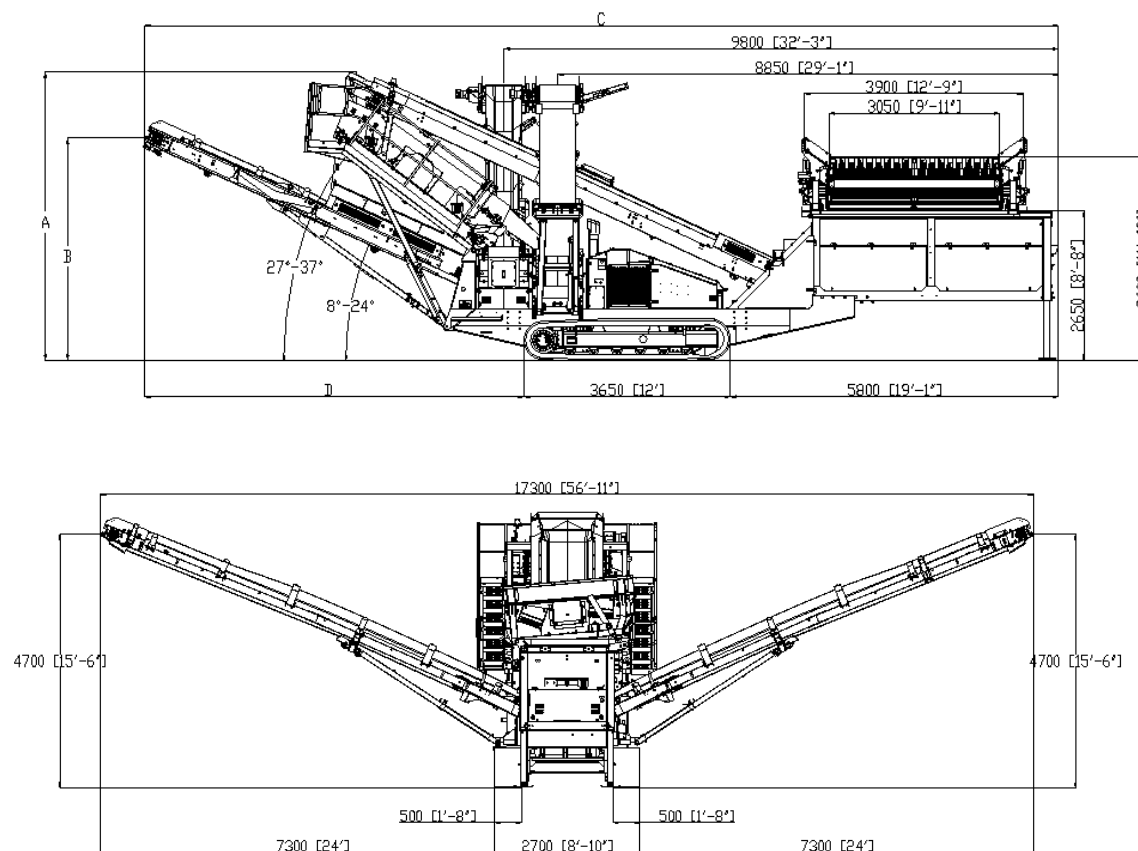
## CHIEFTAIN 1400



## DIMENSIONS

DIMENSION (MM)	27 DEG	30 DEG	33 DEG	37 DEG
A	4759	4871	4974	5112
B	3144	3144	3926	3926
C	16452	16452	16148	16148
D	7037	7037	6733	6733

Figure 5: Chieftain 1400 Track DDVG - Working Position



MORE DIMENSIONS OVERLEAF

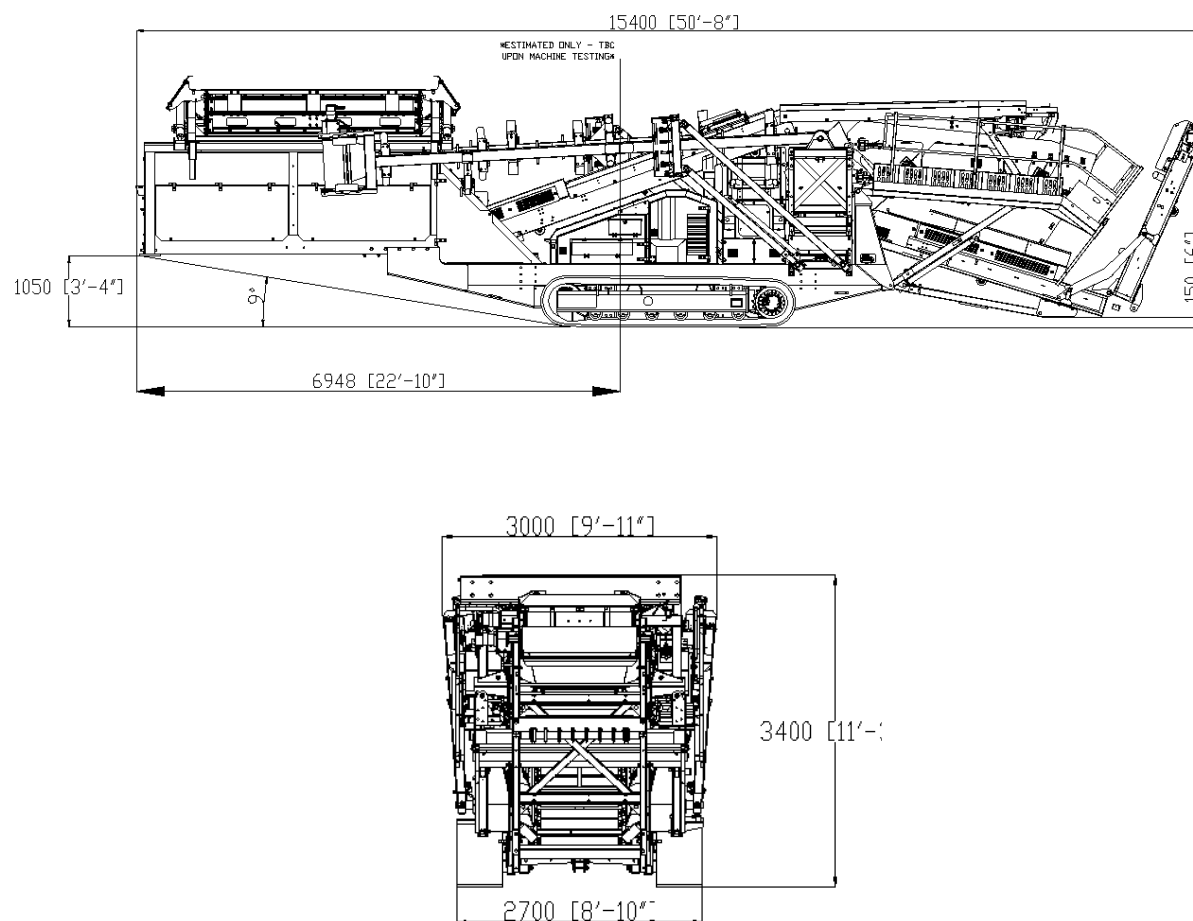


## CHIEFTAIN 1400



## DIMENSIONS

Figure 6: Chieftain 1400 Track DDVG - Transport Position







### **Powerscreen equipment complies with CE requirements.**

Please consult Powerscreen if you have any other specific requirements in respect of guarding, noise or vibration levels, dust emissions, or any other factors relevant to health and safety measures or environmental protection needs. On receipt of specific requests, we will endeavour to ascertain the need for additional equipment and, if appropriate, quote extra to contract prices.

All reasonable steps have been taken to ensure the accuracy of this publication, however due to a policy of continual product development we reserve the right to change specifications without notice.

It is the importers' responsibility to check that all equipment supplied complies with local legislation regulatory requirements.

Plant performance figures given in this brochure are for illustration purposes only and will vary depending upon various factors, including feed material gradings and characteristics. Information relating to capacity or performance contained within this publication is not intended to be, nor will be, legally binding.

## **GET IN TOUCH**

### **Dungannon**

200 Coalisland Road, Dungannon,  
Co Tyrone, BT71 4DR, Northern Ireland  
Tel: +44 (0) 28 87 718 500  
Fax: +44 (0) 28 87 747 231

### **Louisville**

11001 Electron Drive,  
Louisville, Kentucky, 40299 USA  
Tel: +1 502 736 5200  
Fax: +1 502 736 5202

